



STEEL ENCLOSURES

Wall Mounting Enclosures

Floor Mounting Enclosures

Modular Type Floor Mounting Enclosures

Feeder Pillars

Fire Cabinets





ELECTRO METAL PRESSINGS (Pvt) Ltd.

Electro Metal Pressing (Pvt) Limited has more than 20 years of professional experience in the field of manufacturing electric switch boards, relevant cable light systems and accessories, providing superior quality products at reasonable prices.

This brief information catalogue is addressed to you in order to create awareness about our establishment, which produces a vast array of products used throughout the country. **Electro Metal Pressings (Pvt) Ltd** was established in 1992 in Sri Lanka as a leading panel fabricating, assembling & contracting company in the field of Electrical Engineering. We have a fully equipped modern factory at Templebuge Industrial Estate at Panagoda.

“**Electrical Solution to the Nation**” is our Philosophy. Our commitment is to manufacture high quality products, recognize, understand and fulfil our customers’ needs and focus on continuous improvement of the quality of our engineering products as well as 19” Equipment Racks. Our competent staff keeps very stringent, continuous supervision through all stages in the manufacturing process, so that our customers can rest assured, that they are supplied with a high quality product at a reasonable and affordable price.

We strive on maintaining strict time management so that the delivery process is expedited without any delay or inconvenience to the customer. We also produce a variety of products for the Electrical industry, including installations etc., keeping in mind that Quality, Safety & Reliability as our first priority.

This miniaturized catalogue gives you the necessary General Information and Guidelines for Power Distribution Panels, Motor Control Centers, Capacitor Banks, Slotted Embossed Cable Trays, Slotted Cable Ladders, Cable Trunking, 19” Equipment Rack Systems with accessories, etc.

We are glad to mention that the EMP Group has made significant contributions to the development programmes in Sri Lanka, since its inception 20 years ago. With seven Companies under its wing, EMP has created 1000 employment opportunities and continues with the honourable and responsible task of providing affordable and essential products

ELECTRO METAL PRESSINGS (Pvt) Ltd.

Contacts:

Lot No.26A, Templeburg Industrial Estate,
Panagoda, Sri Lanka.

Tel: +94 11 444 2497

Fax: +94 11 275 1900

E-mail: sales@emp.lk, empsales@sltnet.lk,
www.emp.lk

WALL MOUNTING ENCLOSURES	04
FLOOR MOUNTING ENCLOSURES	28
MODULAR TYPE FLOOR MOUNTING ENCLOSURES	35
FEEDER PILLARS	43
FIRE CABINETS	44
INGRES PROTECTION (IP) DETAILS	46

Degree of Protection - IP 54
Standard - IEC 60529

Material Specifications

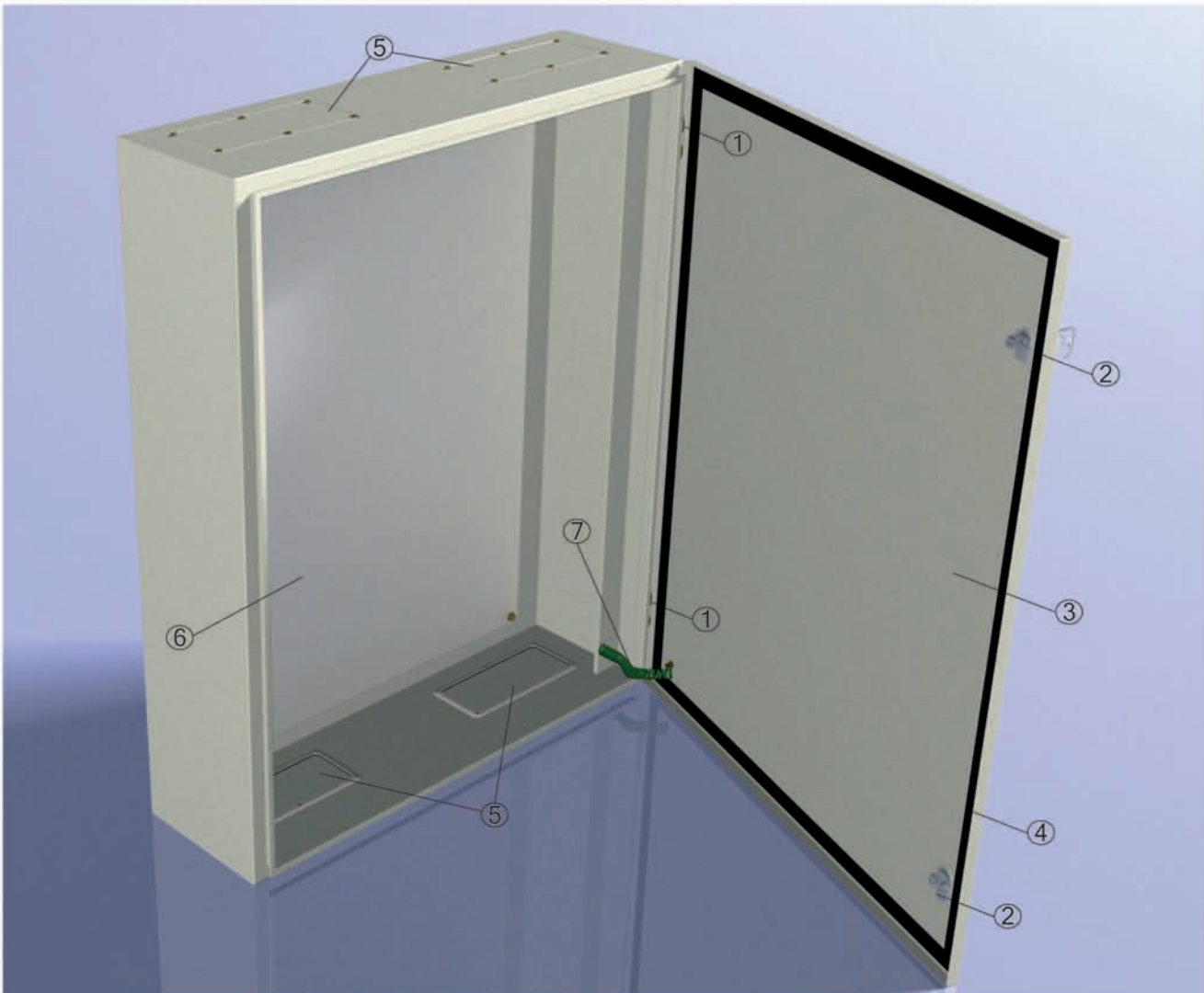
- Aluzinc
- Material thickness: 1.0mm-2.0mm

Surface Finish: Powder coating textured / Semi gloss

Regular Colours: RAL 7032 - Pebble Grey
RAL 7035 - Light Grey
Others on request

Powder coating thickness: 100 ± 20% microns

PARTS OF STANDARD CONSTRUCTION



Standard Construction:

- | | |
|------------------------|--|
| ① Metal Hinges | ⑤ Removable Embossed Gland Plates (Top and Bottom) |
| ② Metal / Plastic Lock | ⑥ Removable Mounting Plate |
| ③ Removable Door | ⑦ Earth Wire |
| ④ Rubber Beeding | |

WALL MOUNTING ENCLOSURE (STANDARD)

Standard construction:

- Welded Type structure
- Removable Door
- Metal locks
- Top and bottom gland plates
- Mounting plate



RANGE OF WALL MOUNTING ENCLOSURES

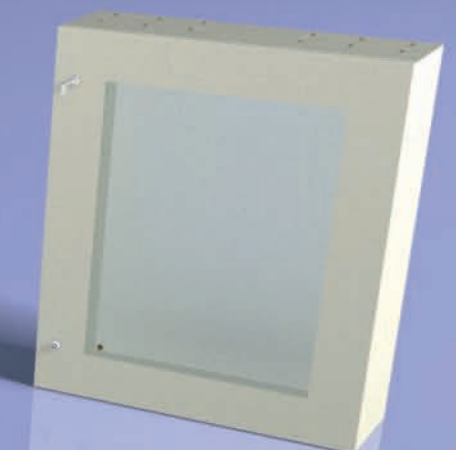
Standard
Zn Aluminum



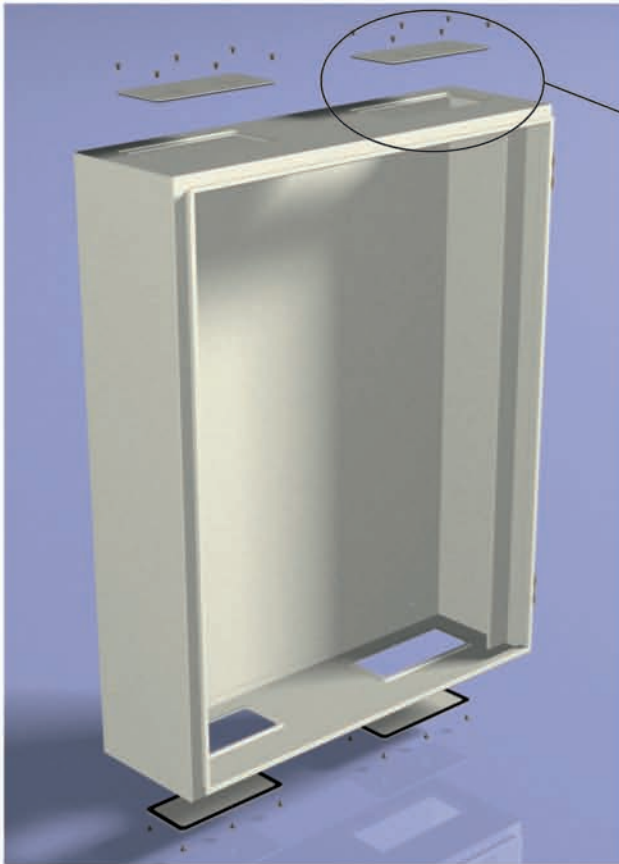
Stainless Steel



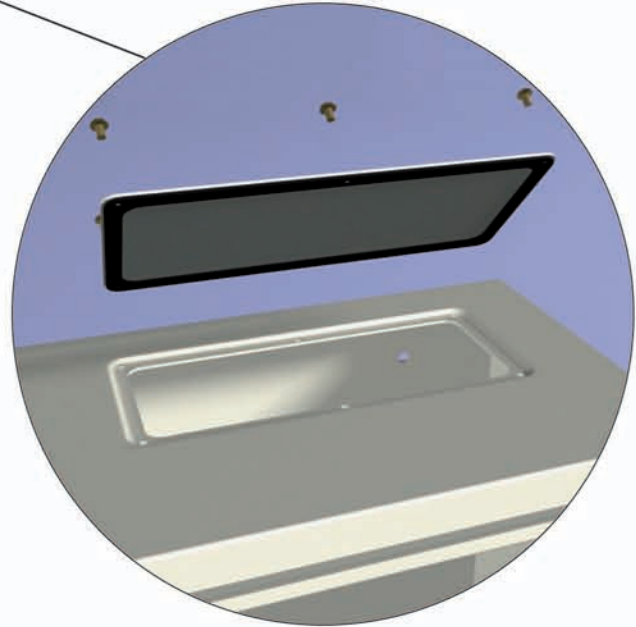
With Glass Door



CABLE ENTRY



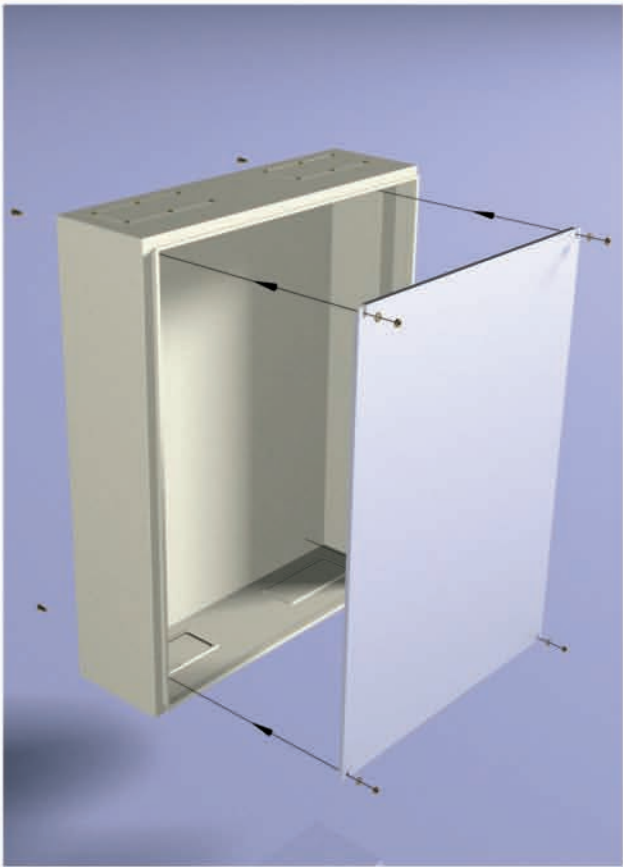
Special Embossed Cable Entry with gasket



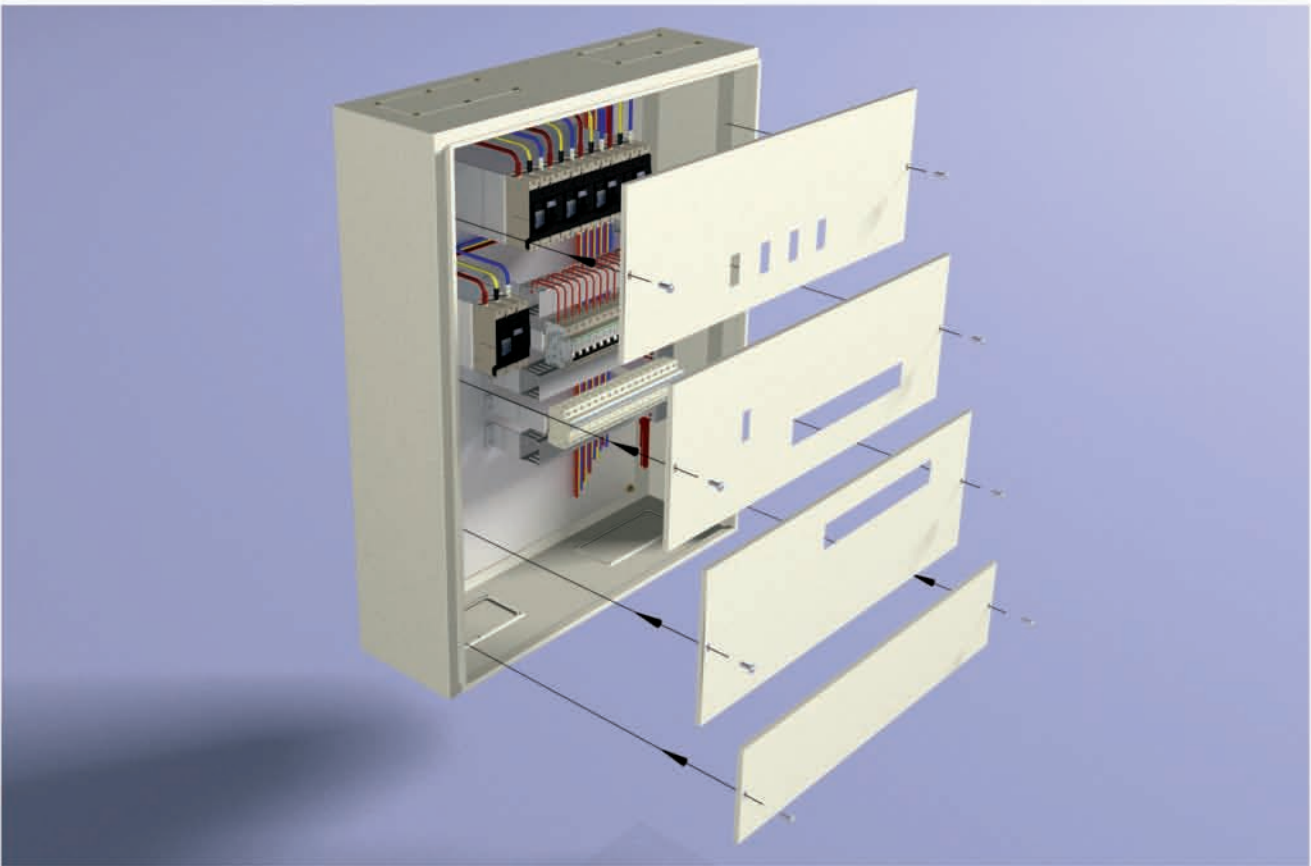
BEEDING



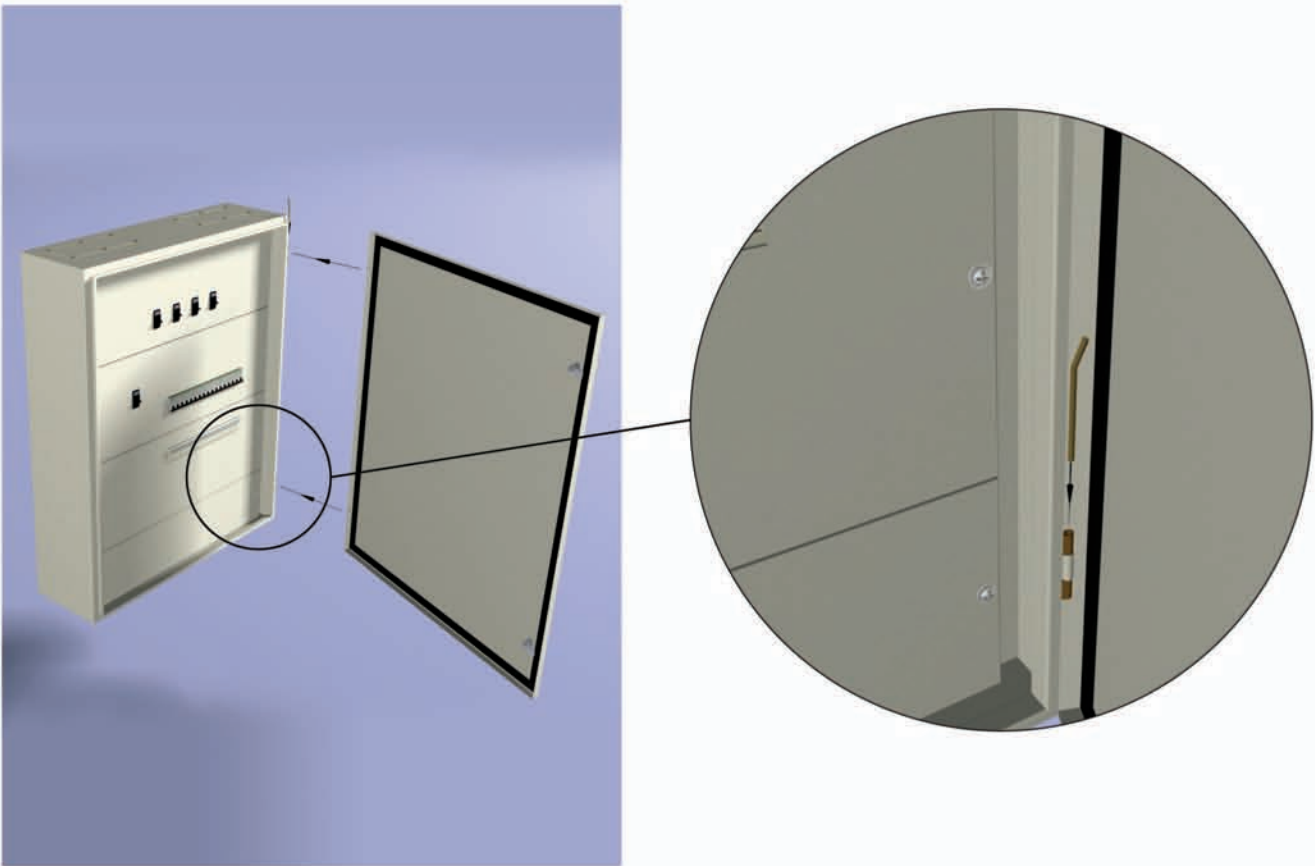
FIXING OF MOUNTING PLATE FIXING OF ELECTRICAL ITEMS



FIXING OF COVER PLATES



FIXING OF DOOR



FINISHED PRODUCT



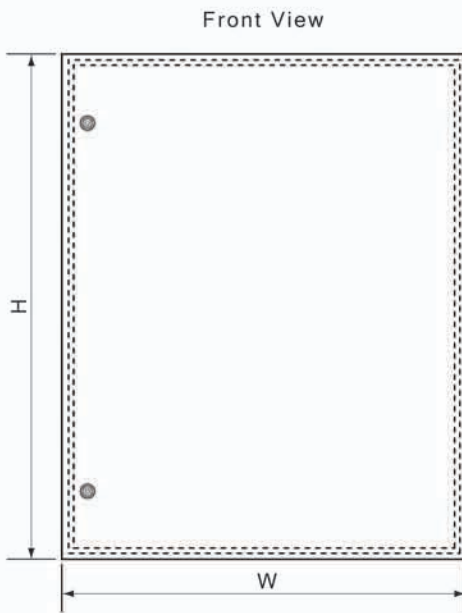
ENCLOSURE WITH DOOR INDICATORS AND METERING



DOOR INDICATORS AND METERING (INTERNAL VIEW)



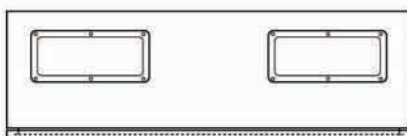
WALL MOUNTING SURFACE TYPE / ORDERING INFORMATION



Side View



Top View



Order Code	W mm	H mm	D mm
WMS-20-02-15	200	200	150
WMS-20-03-15	200	300	150
WMS-25-03-15	250	300	150
WMS-30-03-15	300	300	150
WMS-30-04-15	300	400	150
WMS-40-04-15	400	400	150
WMS-40-05-15	400	500	150
WMS-40-06-15	400	600	150
WMS-40-07-15	400	700	150
WMS-40-08-15	400	800	150
WMS-25-03-20	250	300	200
WMS-30-03-20	300	300	200
WMS-30-04-20	300	400	200
WMS-40-04-20	400	400	200
WMS-40-05-20	400	500	200
WMS-40-06-20	400	600	200
WMS-40-07-20	400	700	200
WMS-40-08-20	400	800	200
WMS-50-06-20	500	600	200
WMS-50-07-20	500	700	200
WMS-50-08-20	500	800	200
WMS-60-06-20	600	600	200
WMS-60-08-20	600	800	200
WMS-60-10-20	600	1000	200
WMS-80-10-20	800	1000	200
WMS-60-12-20	600	1200	200
WMS-80-12-20	800	1200	200
WMS-60-15-20	600	1500	200
WMS-60-08-25	600	800	250
WMS-60-10-25	600	1000	250
WMS-80-10-25	800	1000	250
WMS-60-12-25	600	1200	250
WMS-80-12-25	800	1200	250
WMS-60-15-25	600	1500	250

WALL MOUNTING ENCLOSURES - SUNK



Degree of Protection - IP 54
Standard - IEC 60529

Material Specifications

- Aluzinc
- Material thickness: 1.0mm-2.0mm

Surface Finish: Powder coating textured /
Semi gloss

Regular Colours: RAL 7032 - Pebble Grey
RAL 7035 - Light Grey
Others on request

Powder coating thickness: $100 \pm 20\%$ microns

WALL MOUNTING ENCLOSURE - SUNK (STANDARD)

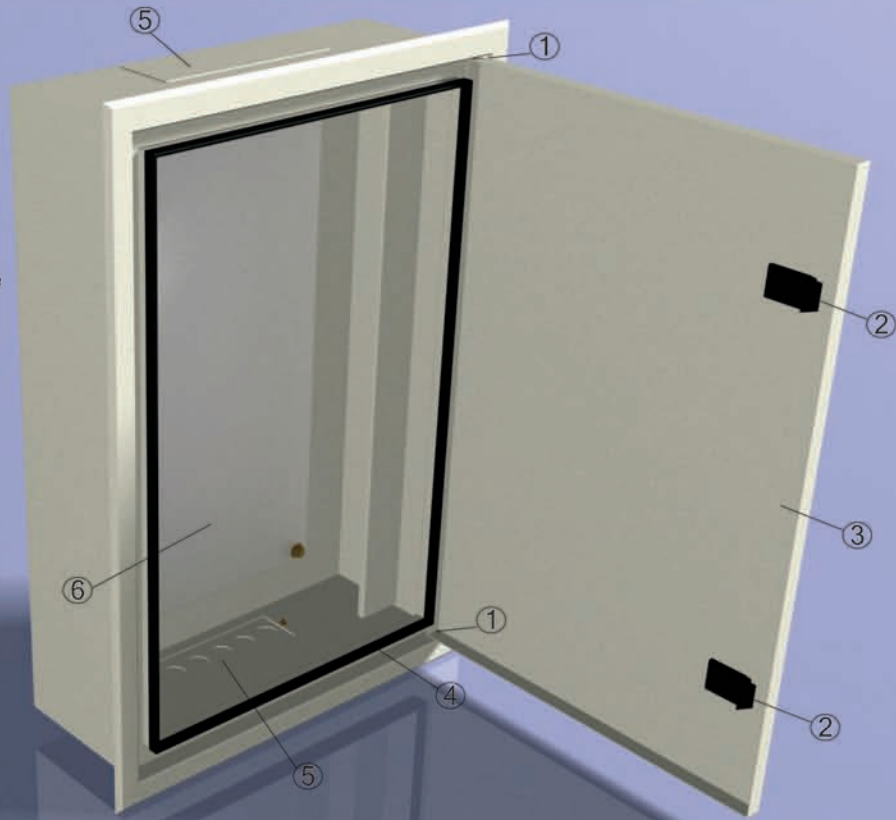
Standard construction:

- Welded Type structure
- Removable collar
- Removable door
- Plastic locks
- Top and bottom gland plates
- Mounting plate



PARTS OF STANDARD CONSTRUCTION

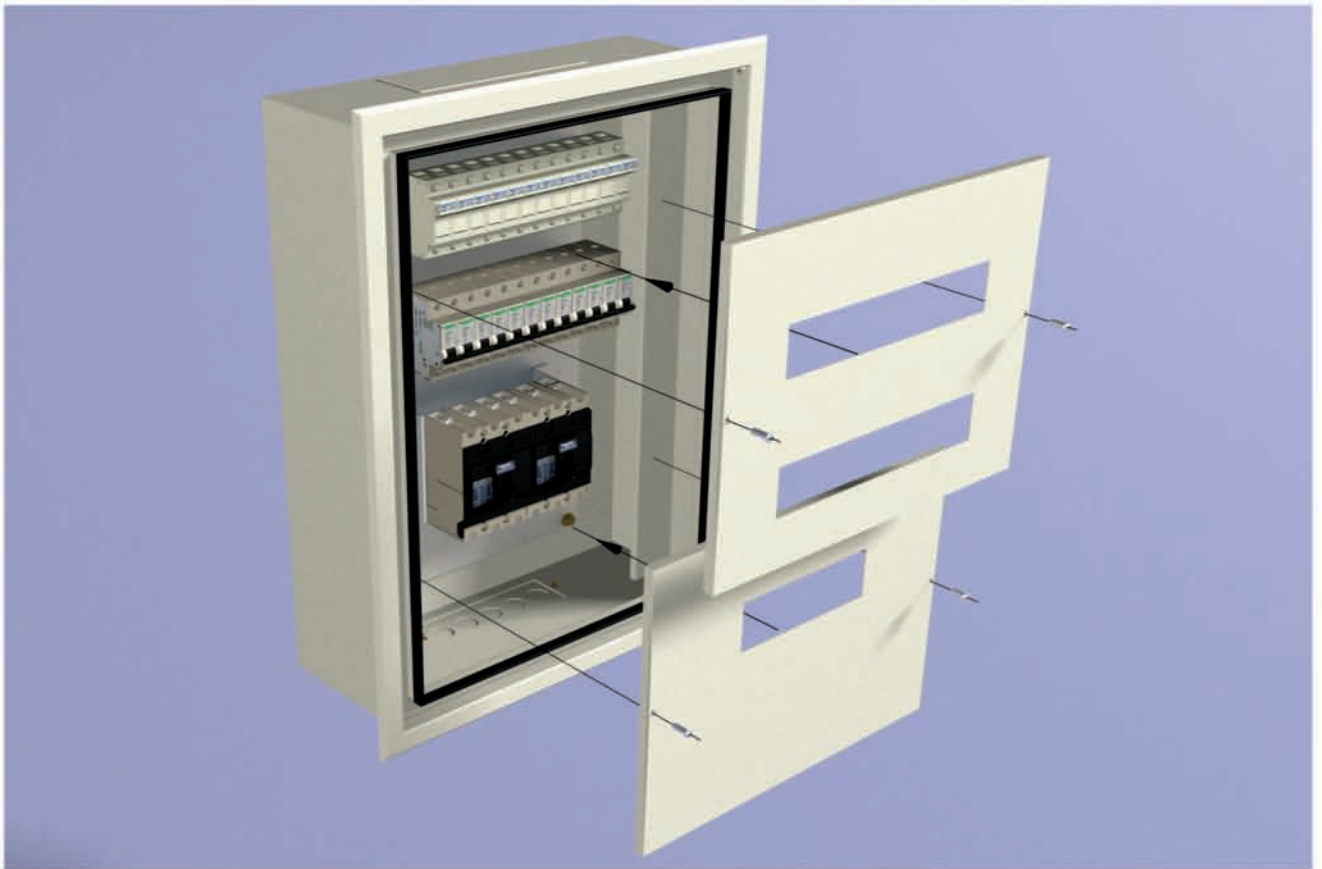
- ① MCU Hinges
- ② Plastic Locks
- ③ Removable Door
- ④ Beeding
- ⑤ Removable Gland Plates
- ⑥ Removable Mounting Plate



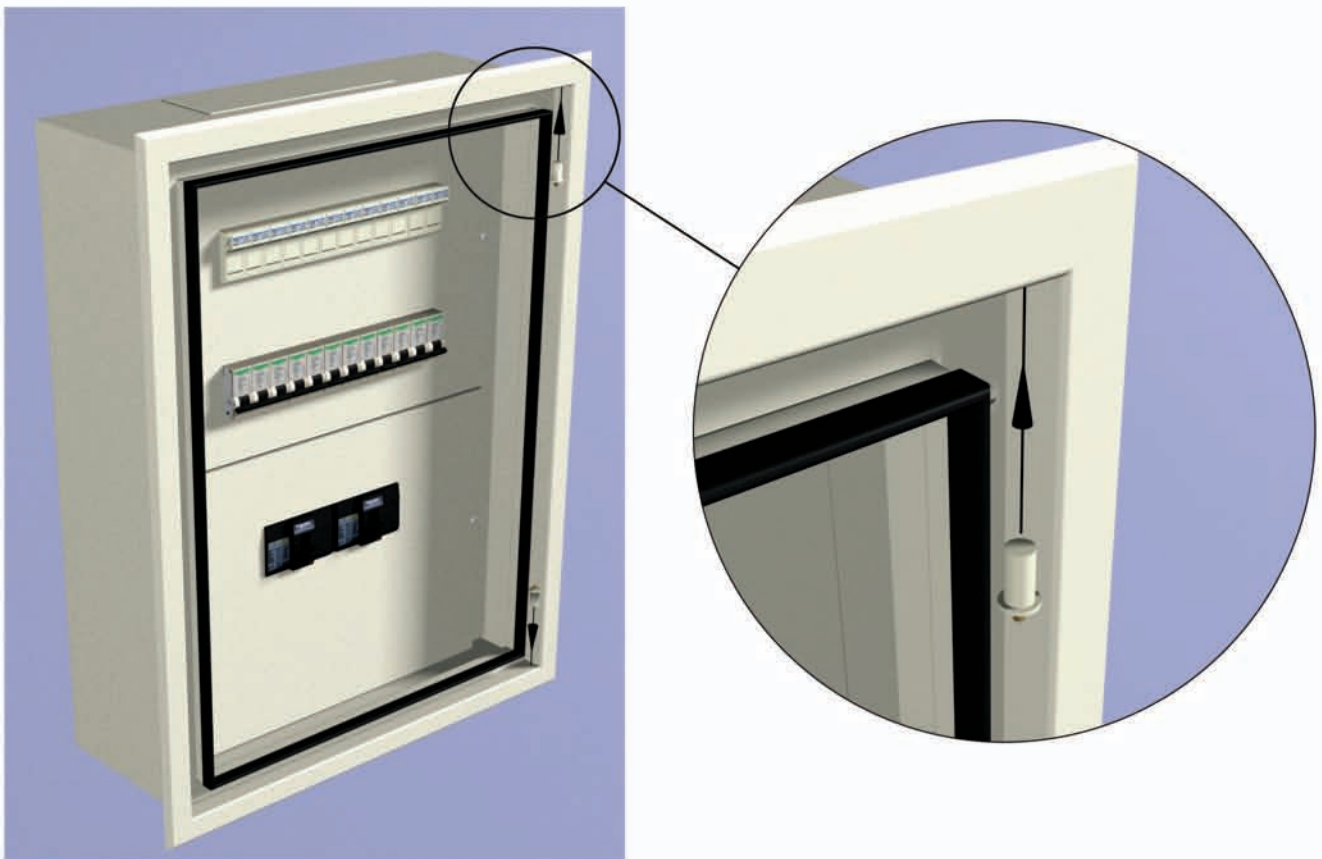
FIXING OF REMOVABLE COLLAR



FIXING OF COVER PLATES



FIXING OF MCU HINCHES



FIXING OF DOOR

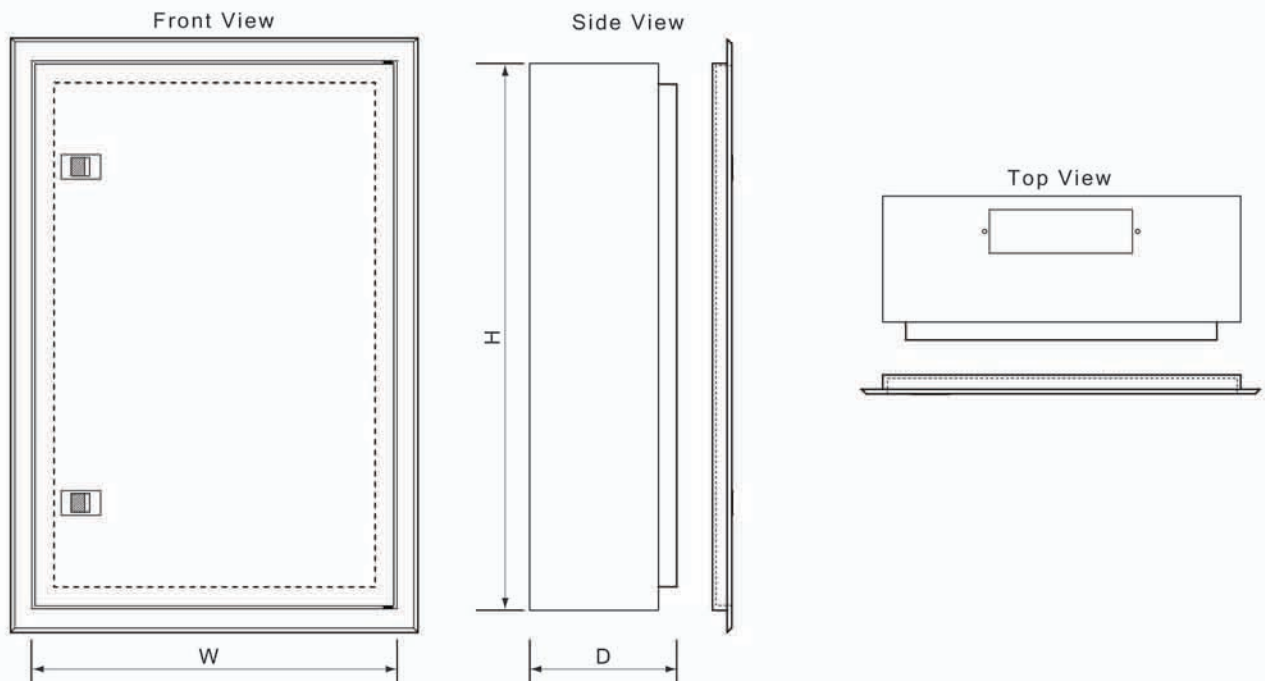


FINISHED PRODUCT



WALL MOUNTING SUNK TYPE / ORDERING INFORMATION

Order Code	W mm	H mm	D mm
WMF-20-02-15	200	200	150
WMF-20-03-15	200	300	150
WMF-25-03-15	250	300	150
WMF-30-03-15	300	300	150
WMF-30-04-15	300	400	150
WMF-40-04-15	400	400	150
WMF-40-05-15	400	500	150
WMF-40-06-15	400	600	150
WMF-40-07-15	400	700	150
WMF-40-08-15	400	800	150
WMF-25-03-20	250	300	200
WMF-30-03-20	300	300	200
WMF-30-04-20	300	400	200
WMF-40-04-20	400	400	200
WMF-40-05-20	400	500	200
WMF-40-06-20	400	600	200
WMF-40-07-20	400	700	200
WMF-40-08-20	400	800	200
WMF-50-06-20	500	600	200
WMF-50-07-20	500	700	200
WMF-50-08-20	500	800	200
WMF-60-06-20	600	600	200
WMF-60-08-20	600	800	200
WMF-60-10-20	600	1000	200
WMF-80-10-20	800	1000	200
WMF-60-12-20	600	1200	200
WMF-80-12-20	800	1200	200
WMF-60-15-20	600	1500	200



Degree of Protection - IP 54
Standard - IEC 60529

Material Specifications

- Aluzinc
- Material thickness: 1.0mm-2.0mm

Surface Finish: Powder coating textured / Semi gloss

Regular Colours: RAL 7032 - Pebble Grey
RAL 7035 - Light Grey
Others on request

Powder coating thickness: 100 ± 20% microns

Features

- Manufactured with industrial standards
- Removable front door
- Full range of size available
- From 10 to 18 modules per Row
- Reversible door for left / right opening
- Surface and Flush type
- Standard 16 modules per Row type DB available in surface & flush mounting.
- The DB's are provided with DIN rail chasis to easily adjust the Depth. Neutral Bars can be Fixed directly on the chasis of Din Rail.
- Din Rail are fixed with screw on the chasis to adjust the Breakers.

MULTI ROW DBS



Order Code	W mm	H mm	D mm	Way	Raw
RDBS-1-08-0M	300	250	125	8 Way	Single Row
RDBS-1-12-0M	350	250	125	12 Way	
RDBS-1-16-0M	400	250	125	16 Way	
RDBS-1-20-0M	500	250	125	20 Way	
RDBS-2-12-0M	350	400	125	12 Way	Two Row
RDBS-2-16-0M	400	400	125	16 Way	
RDBS-2-20-0M	500	400	125	20 Way	
RDBS-3-12-0M	350	600	125	12 Way	Three Row
RDBS-3-16-0M	400	600	125	16 Way	
RDBS-3-20-0M	500	600	125	20 Way	
RDBS-4-12-0M	350	700	125	12 Way	Four Row
RDBS-4-16-0M	400	700	125	16 Way	
RDBS-4-20-0M	500	700	125	20 Way	
RDBS-2-12-1M	350	650	150	12 Way	2 Row DB + Provision for MCCB
RDBS-2-16-1M	400	650	150	16 Way	
RDBS-2-20-1M	500	650	150	20 Way	
RDBS-3-12-1M	350	850	150	12 Way	3 Row DB + Provision for MCCB
RDBS-3-16-1M	400	850	150	16 Way	
RDBS-3-20-1M	500	850	150	20 Way	

SINGLE ROW AND TWO ROW



THREE ROW AND FOUR ROW



TWO ROW AND THREE ROW WITH MCCB



Degree of Protection - IP 54
Standard - IEC 60529

Material Specifications

- Aluzinc
- Material thickness: 1.0mm-2.0mm

Surface Finish: Powder coating textured /
Semi gloss

Regular Colours: RAL 7032 - Pebble Grey
RAL 7035 - Light Grey
Others on request

Powder coating thickness: $100 \pm 20\%$ microns

WALL MOUNTING ENCLOSURE (STANDARD)

Standard construction (Sunk Single row):

- Welded Type structure
- Removable Door with cover plate
- Plastic lock
- Top and bottom gland plates
- Mounting bracket



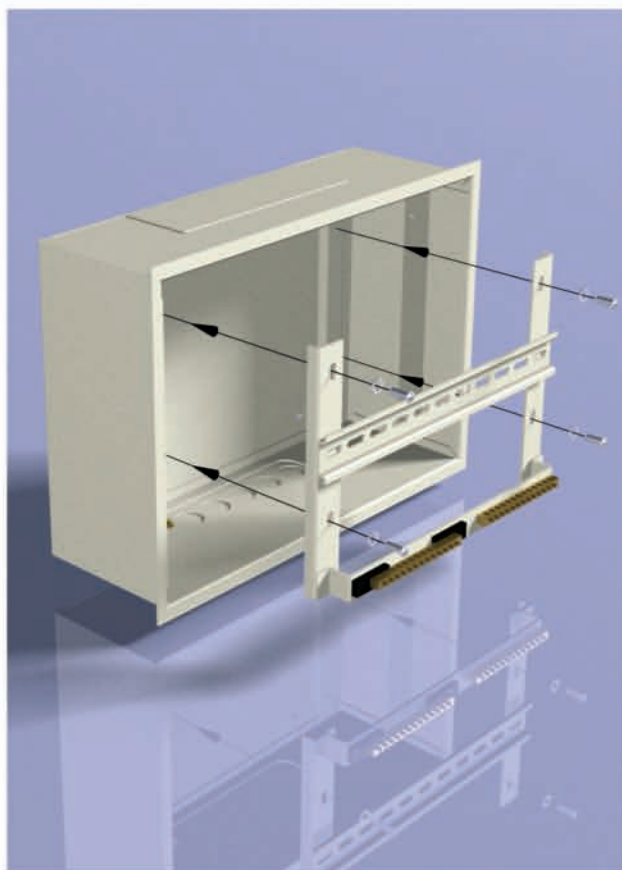
MAIN FRAME



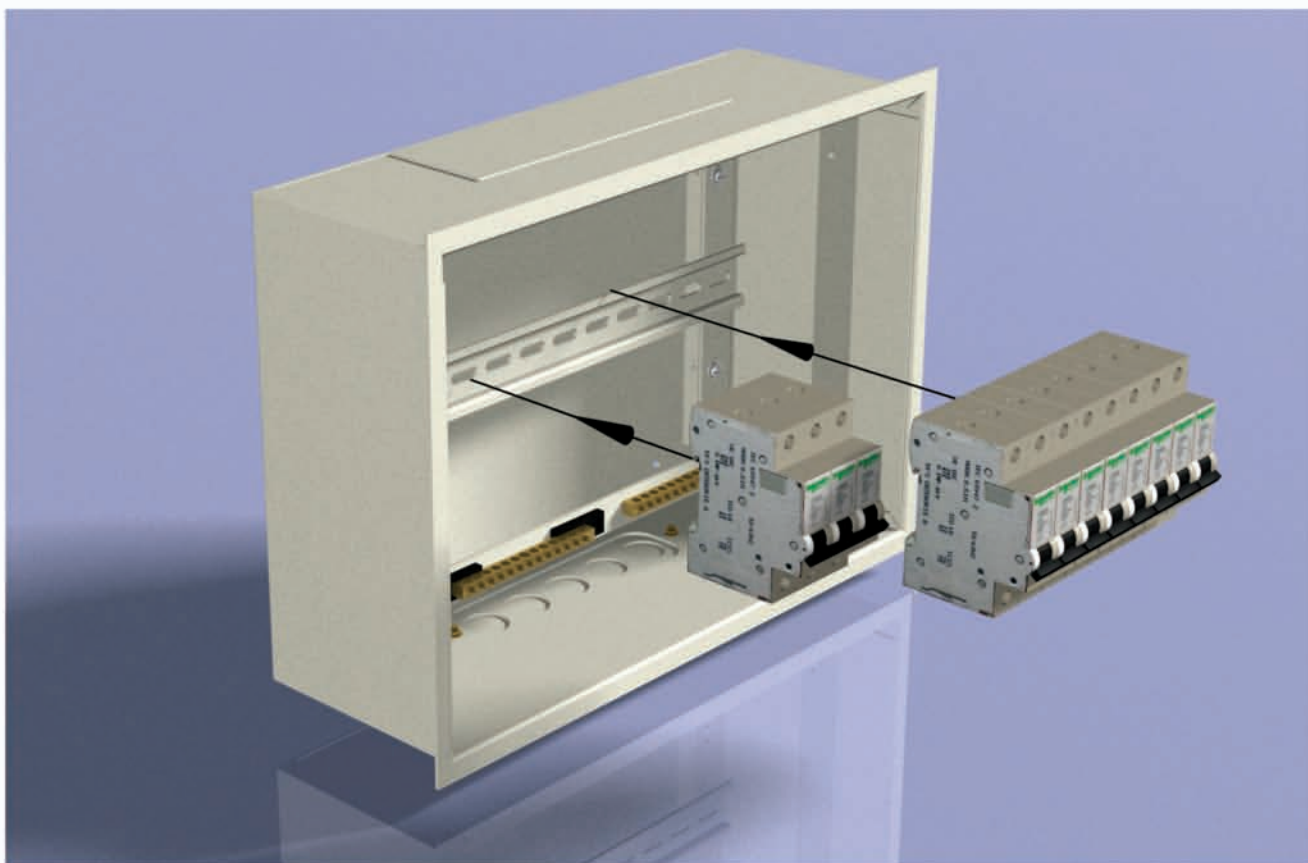
CABLE ENTRY



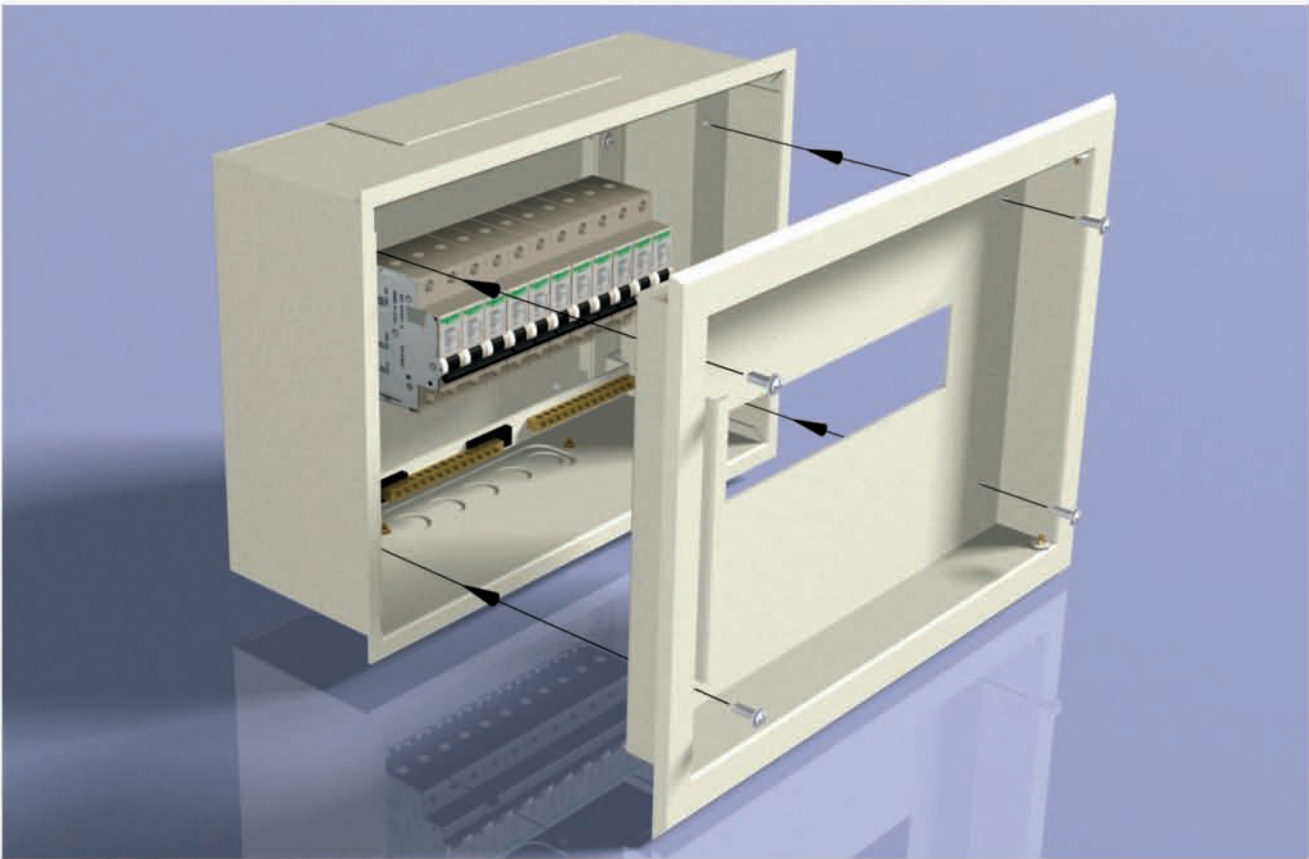
MOUNTING BRACKET



FIXING OF ELECTRICAL ITEMS



FIXING OF COVER PLATE



FIXING OF DOOR

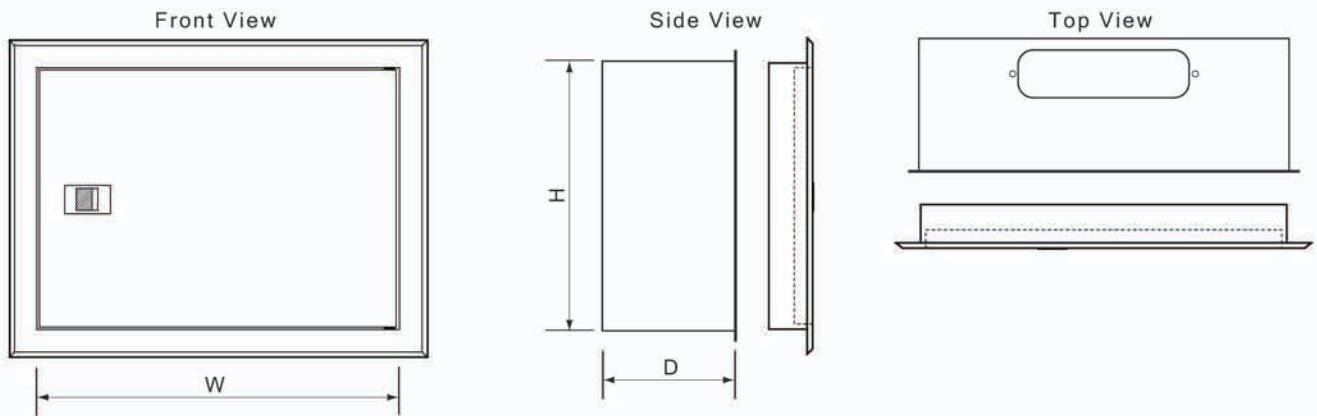


FINISHED PRODUCT

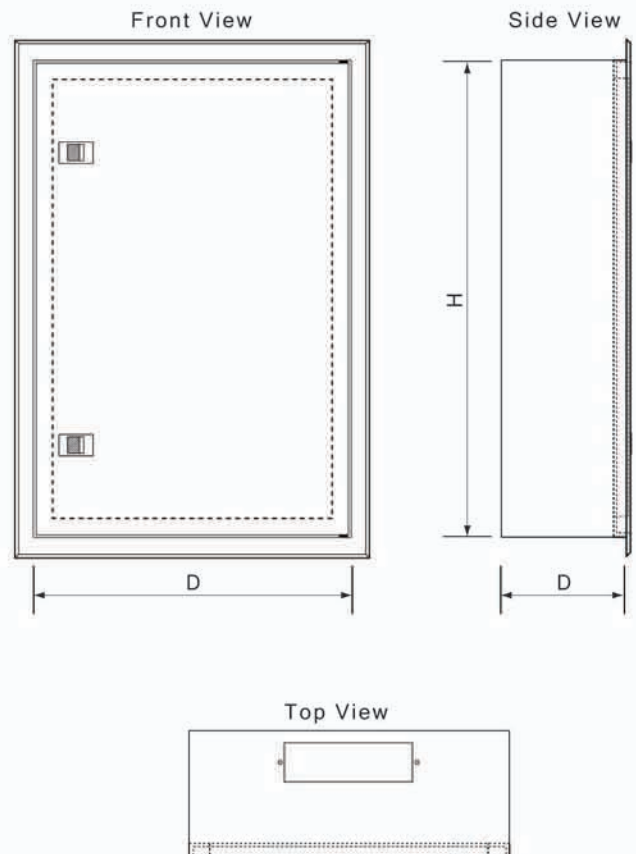
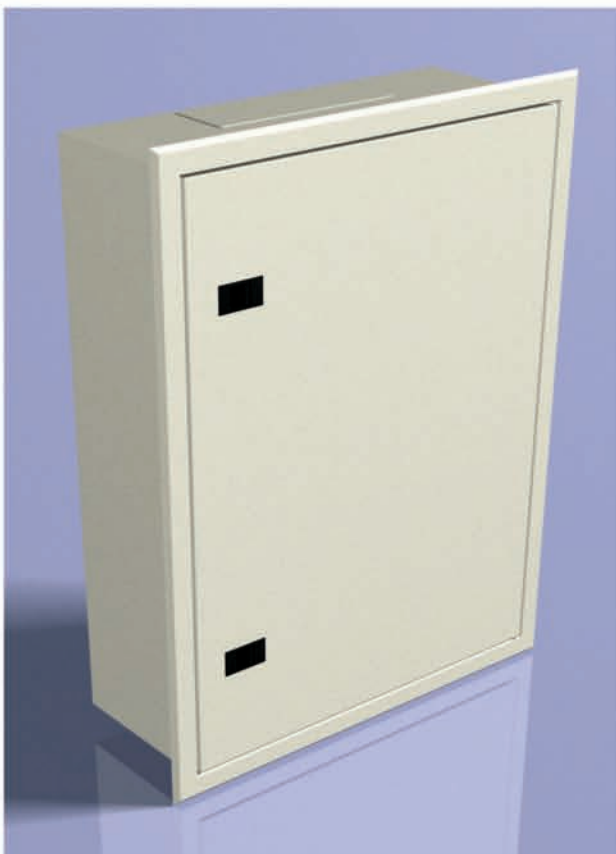


SUNK TYPE (SINGLE ROW) / ORDERING INFORMATION

Order Code	W mm	H mm	D mm
WMF2-35-25-12	350	250	125
Other sizes on request			



SUNK TYPE (WELDED)



Standard construction:

- Welded Type structure with collar
- Removable door
- Plastic locks
- Top and bottom gland plates
- Mounting plate

For Customer Service Details refer PAGE 15.

SURFACE TYPE MOUNTING SYSTEM



SUNK TYPE MOUNTING SYSTEM



Degree of Protection - IP 54
Standard - IEC 60529

Material Specifications

- Aluzinc
- Material thickness: 1.0mm-2.0mm

Surface Finish: Powder coating textured /
Semi gloss

Regular Colours: RAL 7032 - Pebble Grey
RAL 7035 - Light Grey
Others on request

Powder coating thickness: $100 \pm 20\%$ microns

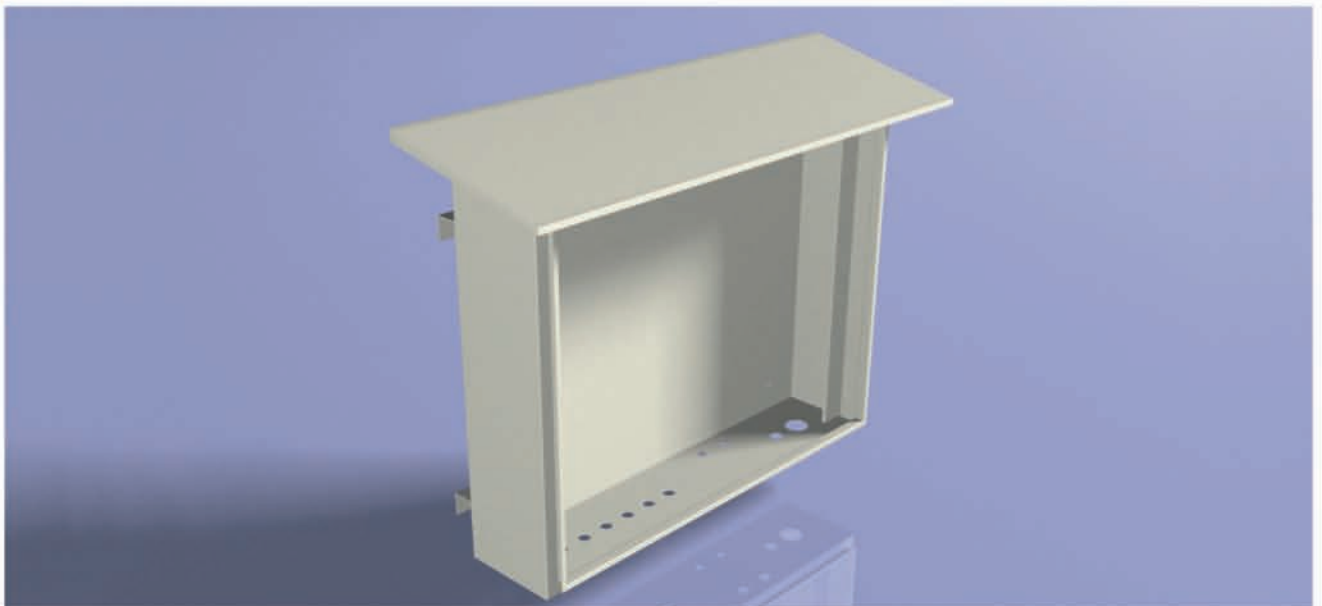
WALL MOUNTING ENCLOSURES - STANDARD

Standard construction:

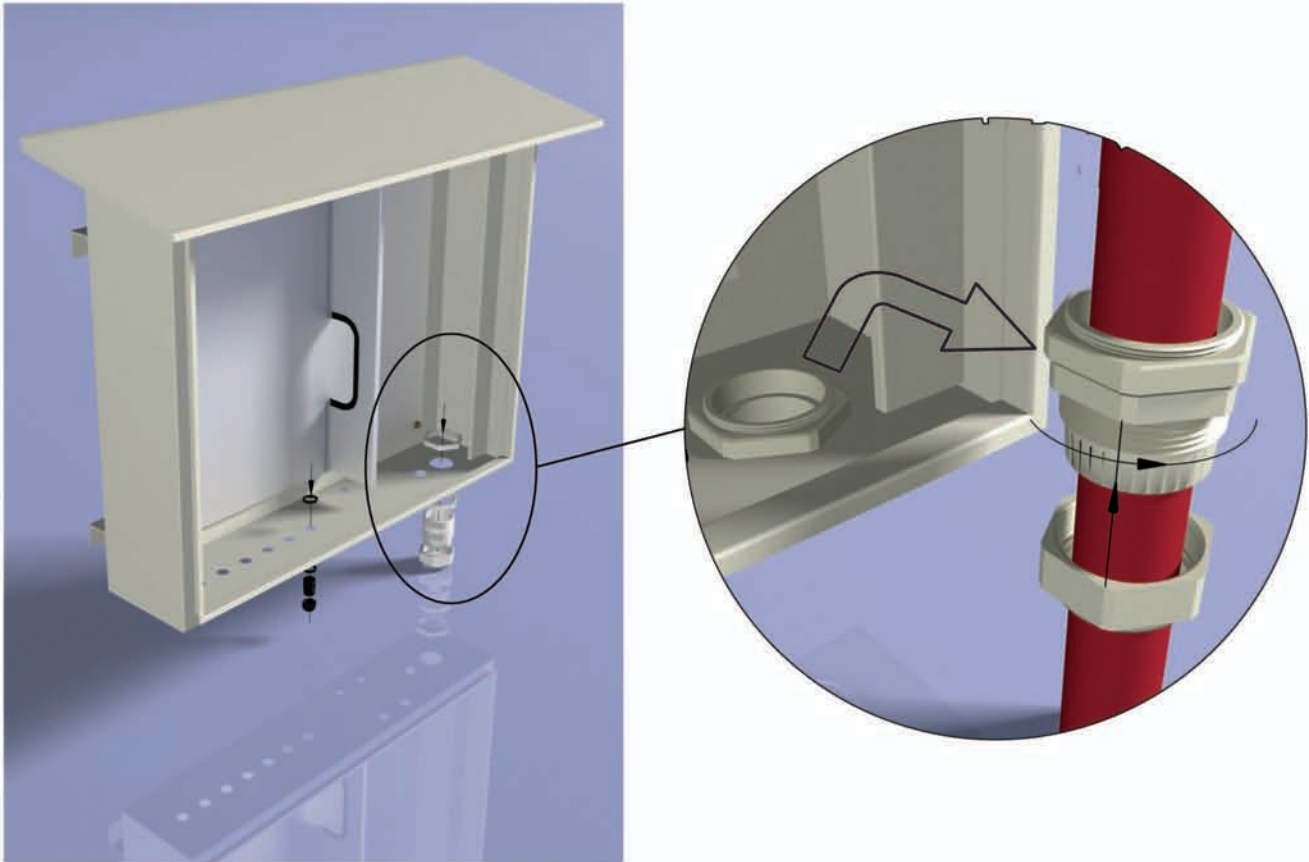
- Welded Type structure
- Removable Door
- Metal locks
- Bottom cable entry plates/
Nylon Cable Glands
- Mounting plate



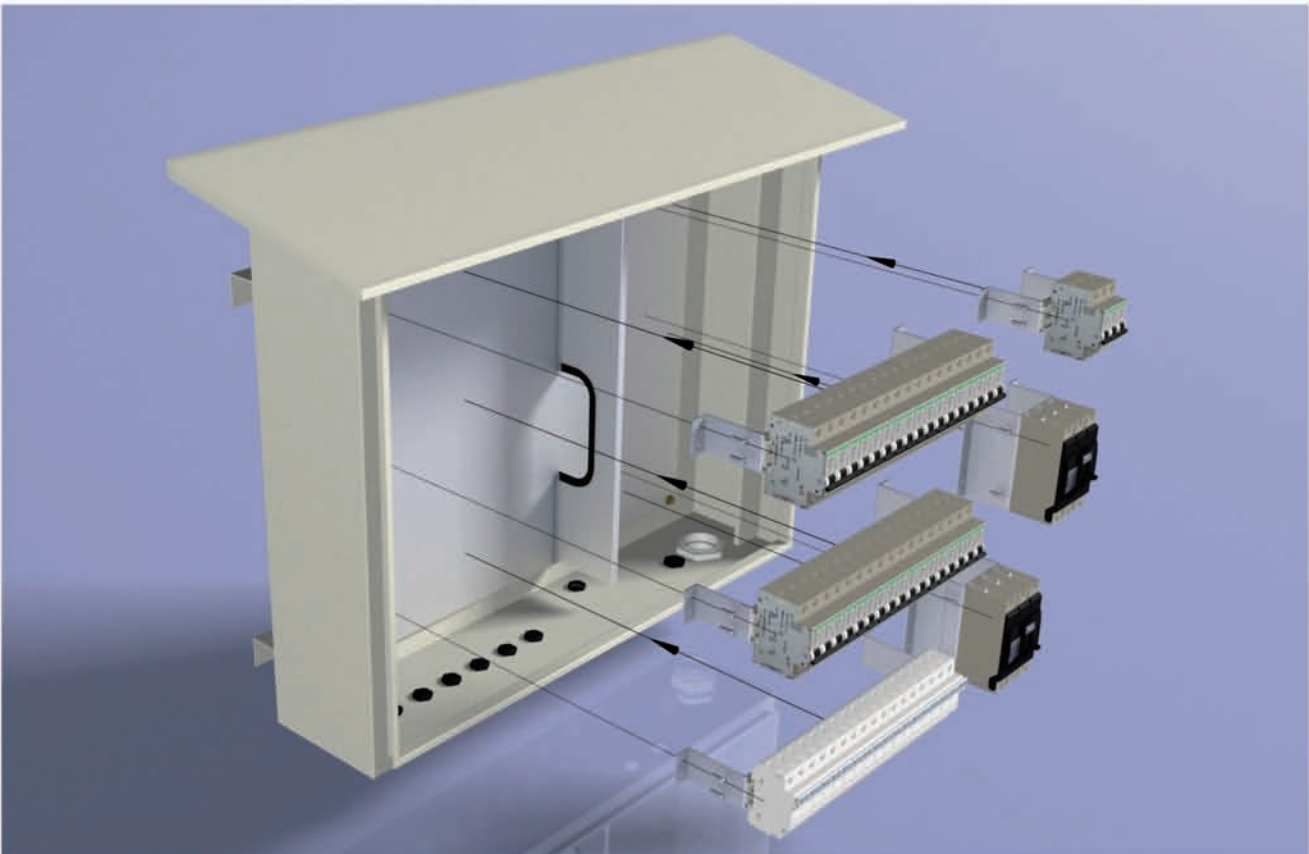
MAIN FRAME



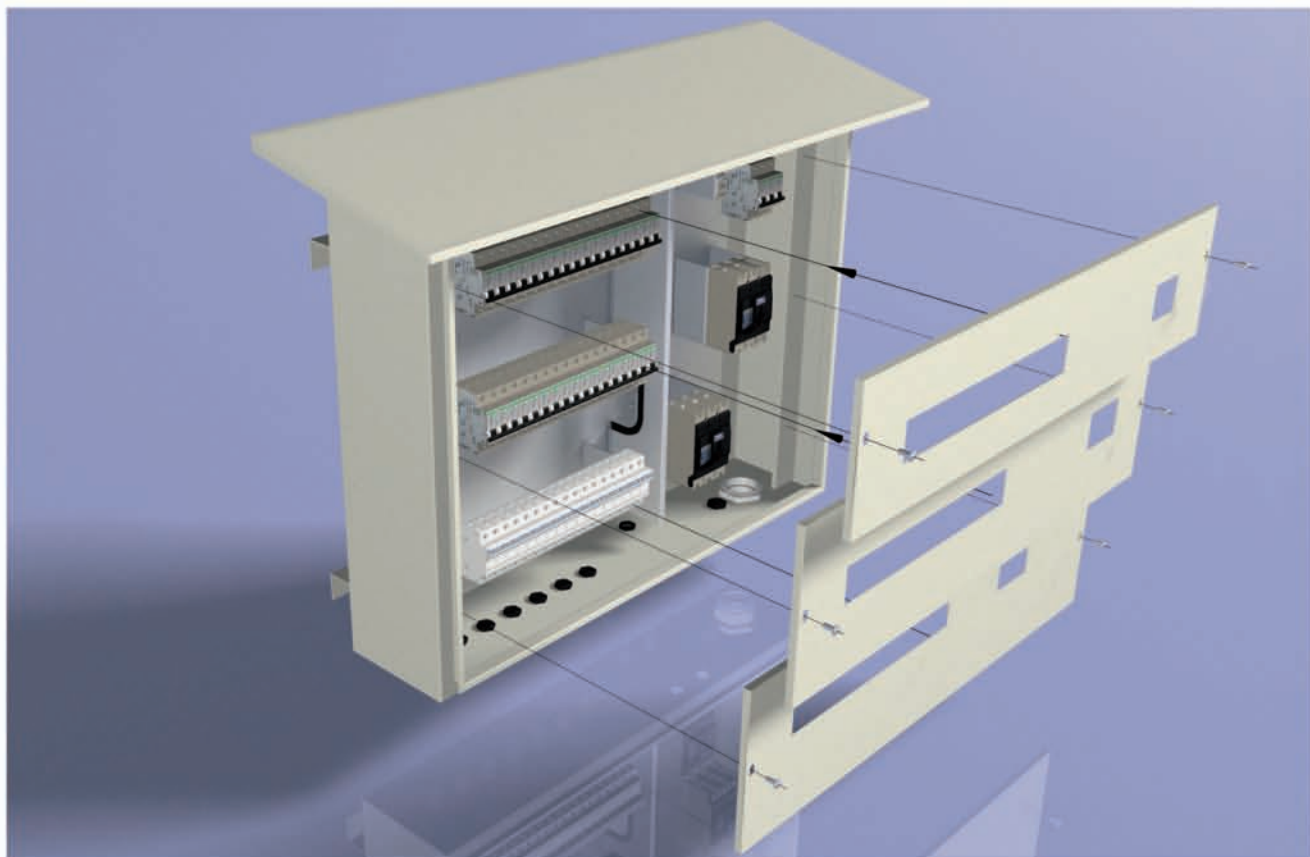
FIXING OF NYLON CABLE GLANDS



FIXING OF ELECTRICAL ITEMS



FIXING OF COVER PLATES



FINISHED PRODUCT



METAL DOOR



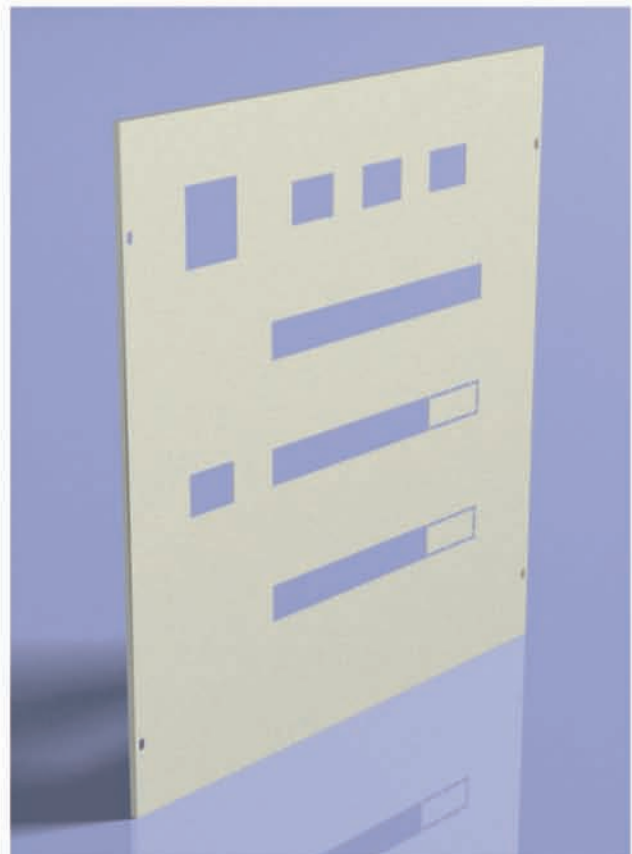
DOOR WITH CUTOUTS



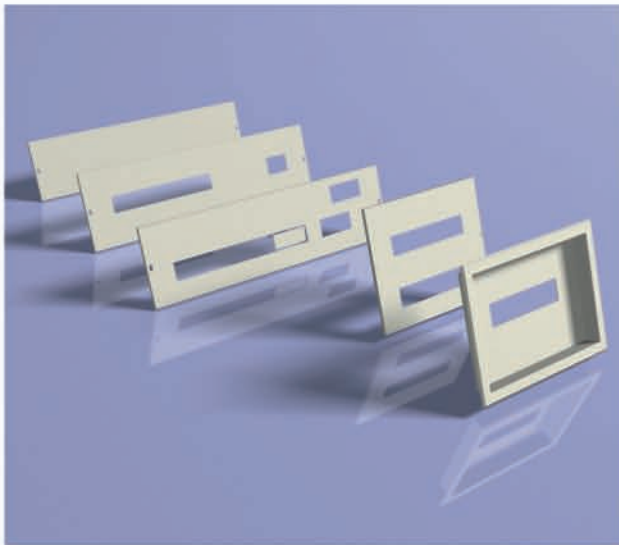
GLASS DOOR



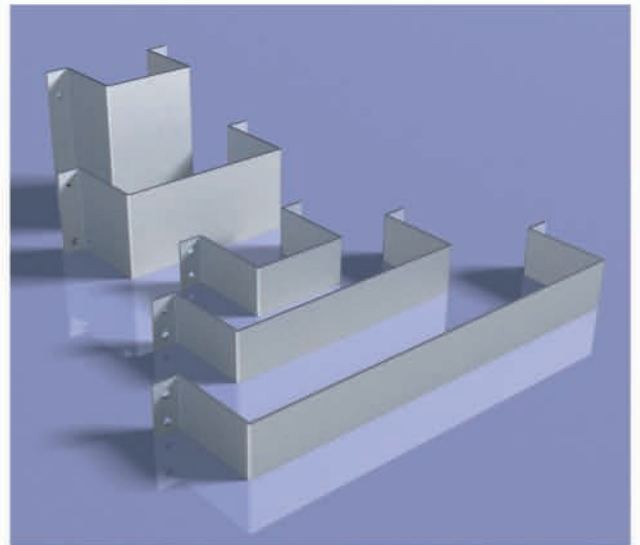
FULL COVER PLATE



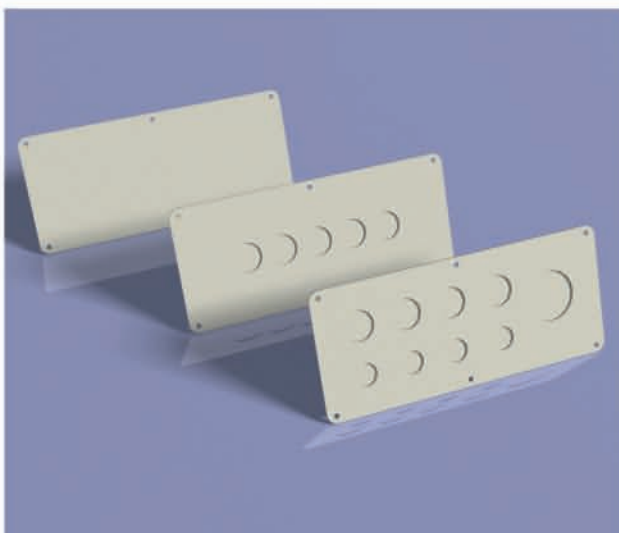
COVER PLATES



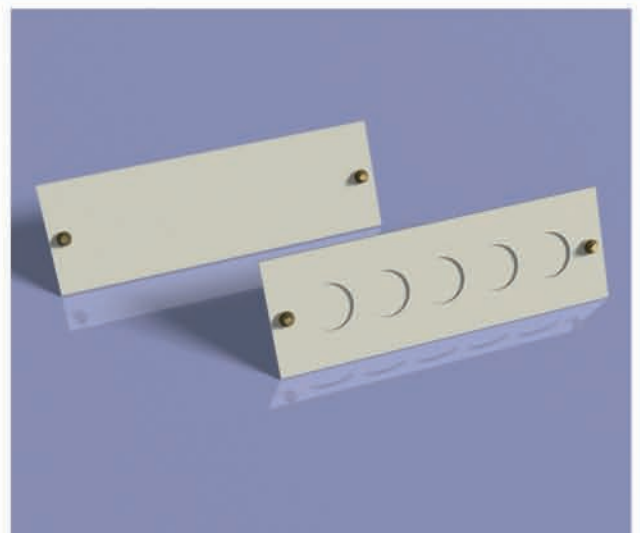
MOUNTING BRACKETS



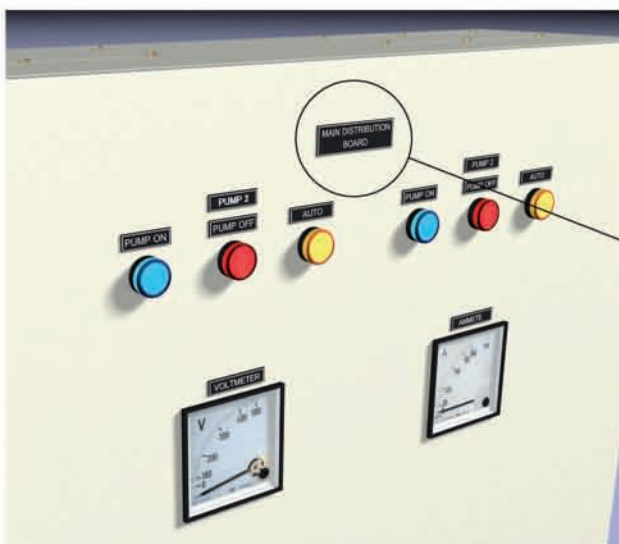
GLAND PLATES



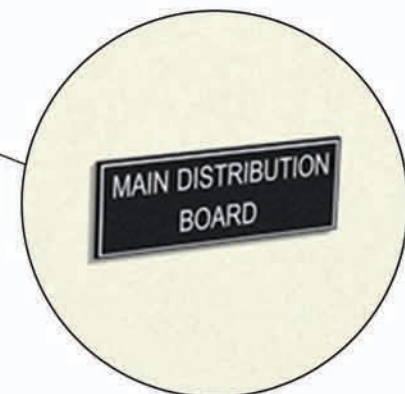
GP FOR SUNK TYPE



ENGRAVING LABELS / ORDER INFORMATION



- Max. Height - 80 mm
- Max. Width - 210 mm
- Thickness - 1 mm
- Material - Plastic



Degree of Protection - IP 54
Standard - IEC 60529

Material Specifications

- Aluzinc
- Material thickness: 1.0mm-2.0mm

Surface Finish: Powder coating textured /
Semi gloss

Regular Colours: RAL 7032 - Pebble Grey
RAL 7035 - Light Grey
Others on request

Powder coating thickness: $100 \pm 20\%$ microns

FLOOR MOUNTING ENCLOSURE (STANDARD)

Standard construction:

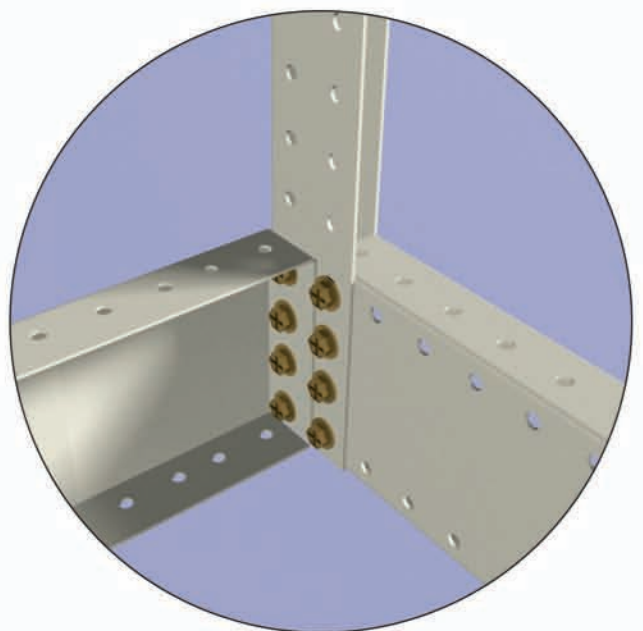
- Assemble type structure
/ Welded type structure
- Removable Front Metal door
- Top and bottom gland plates
- Side and rear cover plates
- Metal locks



FIXING OF FRONT AND BACK FRAMES



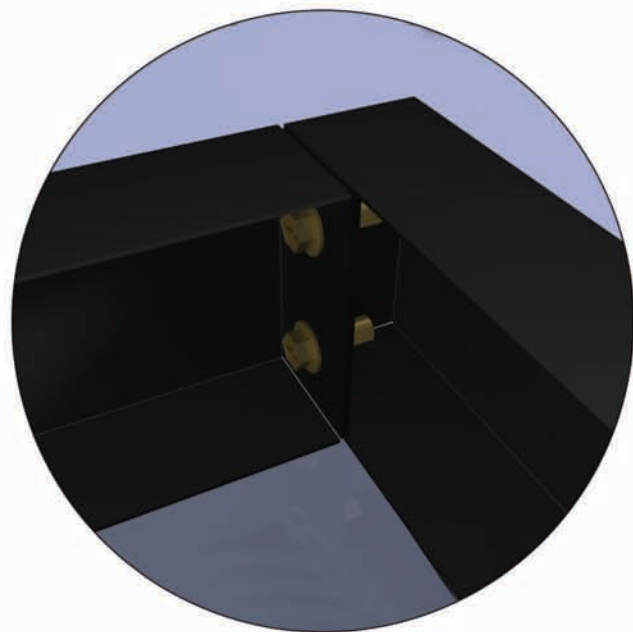
FIXING OF FRONT AND BACK FRAMES TOGETHER



FIXING OF EQUIPMENT MOUNTING BARES



FIXING OF BASE FRAME



FIXING OF BASE FRAME



FIXING OF GLAND PLATES



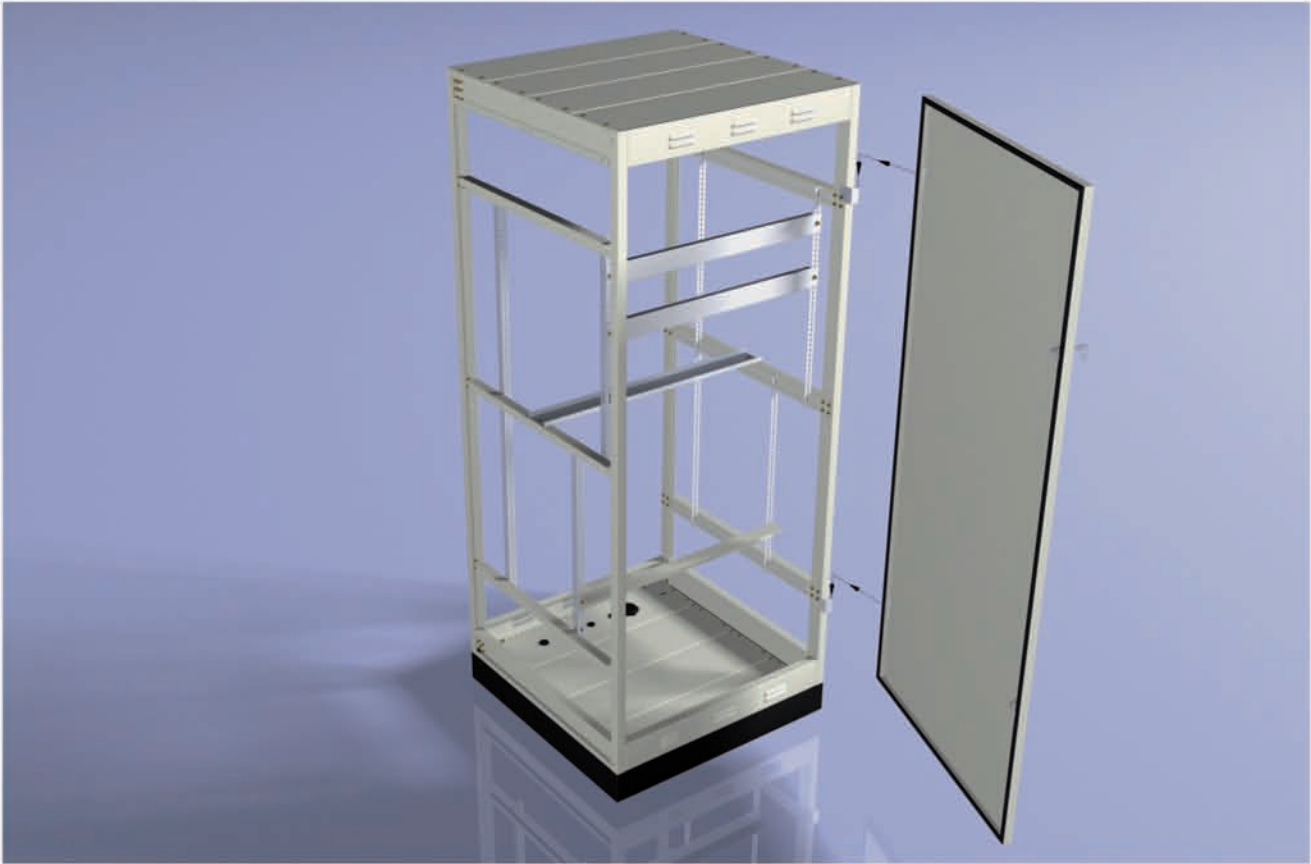
FIXING OF SIDE COVERS



FIXING OF REAR COVER



FIXING OF FRONT DOOR

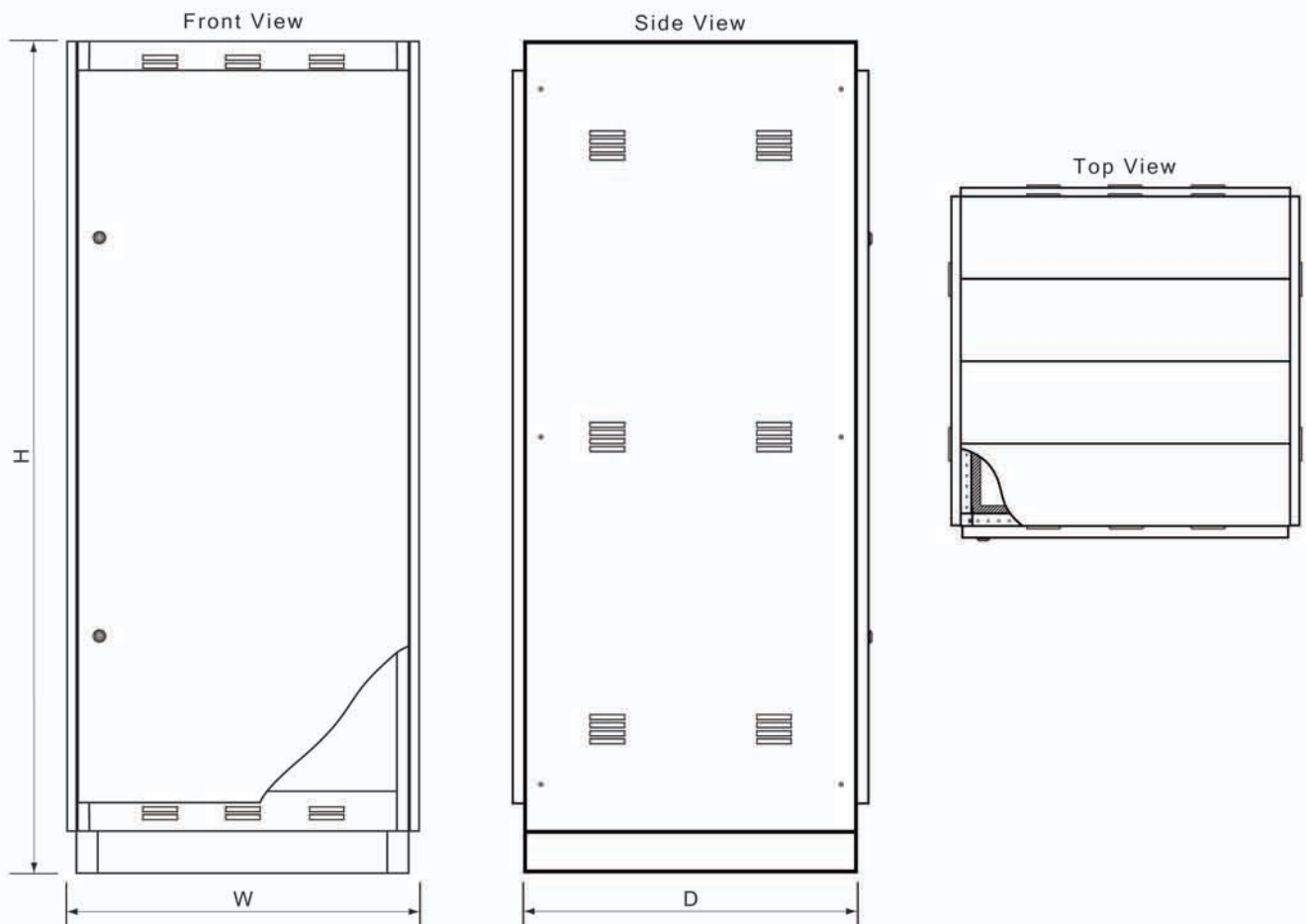


FINISHED PRODUCT

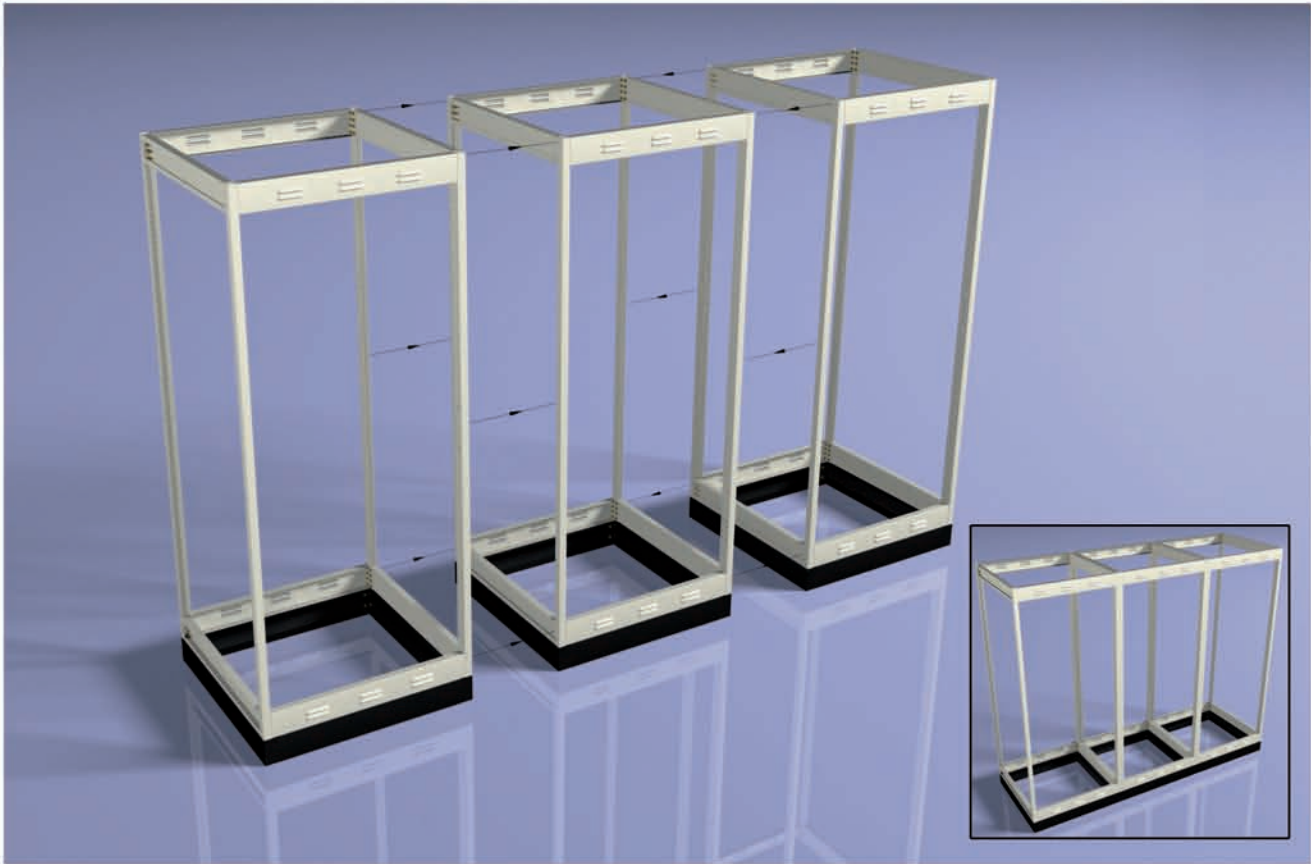


FLOOR MOUNTING ENCLOSURES / ORDERING INFORMATION

Order Code	W mm	H mm	D mm
FSA-60-12-04	600	1200	400
FSA-60-16-04	600	1600	400
FSA-60-18-04	600	1800	400
FSA-60-20-04	600	2000	400
FSA-80-20-04	800	2000	400
FSA-60-12-05	600	1200	500
FSA-60-16-05	600	1600	500
FSA-60-18-05	600	1800	500
FSA-60-20-05	600	2000	500
FSA-80-20-05	800	2000	500
FSA-60-22-05	600	2200	500
FSA-80-22-05	800	2200	500
FSA-60-20-06	600	2000	600
FSA-80-20-06	800	2000	600
FSA-60-20-08	600	2000	800
FSA-80-20-08	800	2000	800
FSA-60-20-10	600	2000	1000
FSA-80-20-10	800	2000	1000



POSSIBILITY TO EXTEND THE FRAMES



3 CUBICAL PANEL - FINISHED PRODUCT



MODULAR TYPE FLOOR MOUNTING ENCLOSURES

Features

- Form 4 types 6 or 7 individual metal compartments
- Totally enclosed busbars & risers in sheet compartments.
- Naturally Ventilated
- Compact modular design conserves maximum space.
- Rear access construction with protective devices removable from the front.
- Special dimensions to customer requirements.
- Wide choice of devices ACBs, MCCBs and fuse-switches.
- Integral power factor correction.
- Comprehensive range of ancillary equipment including ammeters, voltmeters and kWh meters.
- Wide range of control options including PLCs and BMS interfacing.
- Choice of locking devices includes Castell locking, shaft and handle locking.
- Versatile enclosure system allows future extension of switchboard.
- Standard - ICE 439-1
- Rated Volt = 600 V
- Rated Current up to 6000 A



Engineering & design

A complete system design and application service is available from our specialist technical team, who are always available to help and advise on any project.

Construction

- EMP Form 4 fully compartmentalized low voltage switchboards are of standardized modular construction giving a great degree of flexibility and good technical performance.
- The basic design includes corner sections providing facilities for 'L' or 'U' shaped assemblies.

Comprehensive Specification

EMP switchboards are designed so that combinations of fuse switches, MCCBs, ACBs, power factor correction equipment, CTs anti-condensation heaters and other ancillary equipment can be arranged in vertical stacks, complete with busbars, riser and interconnections.

Rear Access

Totally suited to heavy current applications and providing unobstructed access at the rear for cabling.

Standard Rear Access Switchboard Dimensions

- Depth - 650mm, 1000mm, 1300mm to meet system requirements.
- Height - Width 400mm to 1100mm plus ventilation cowls.
- Dimension of switchboards can be accommodated to meet customer specifications.

Cabling

The rear access design has full cable segregation suitable for top and bottom cable and busduct entry, with removable cable entry plates being provided where appropriate.

Locking Devices

Locking options include Castell / Ronis door, Shaft and handle locking.



Thermal Imaging Accessibility

- Zero downtime for removal of metal compartments image during thermal image scanning.
- Zero downtime for power interruption.
- Thermal imaging facilities as fitted in our type test assembly during Type Testing.

Cabling Rear & Top / Bottom Access

- Individual load circuit cable boxes are provided at the rear cable entry.
- Each box consists of an access cover and a flat removable blank gland to provide easy site drilling and fixing of cable glands.

Earthing (EQUI - potential bonding)

For total compliance with IEC 439-1 regulation, EMP has a comprehensive earth bonding system which directly bonds all doors, removable covers, cable boxes and compartment barriers to the system earth bar. EMP switchboard has an earth system ASTA certified for fault levels up to 30KA and 39KA for 3 seconds.

FULL DEVIDE PERFORATED PLATE

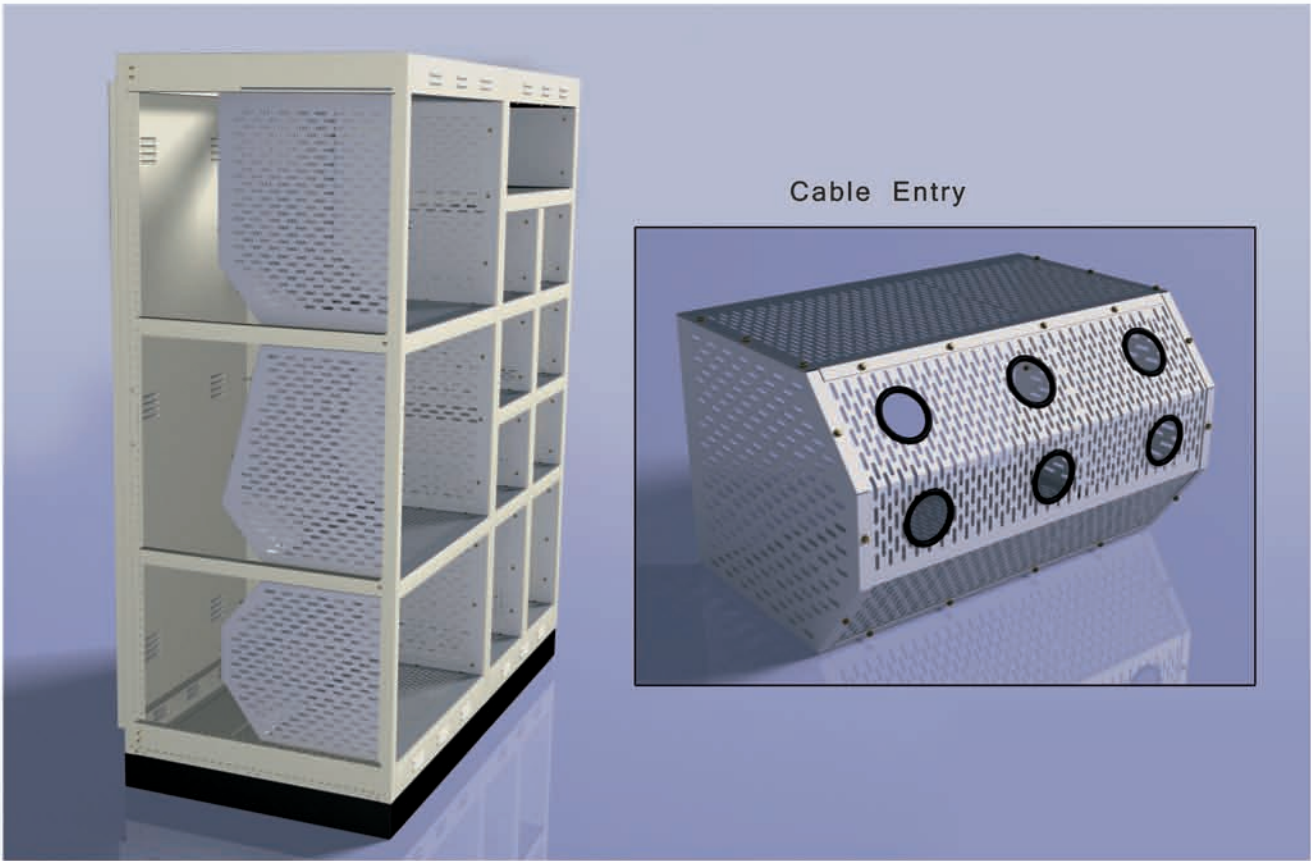


STANDARD SQUARE SHAPE TERMINAL BOXES

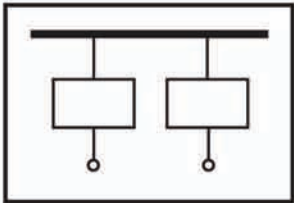
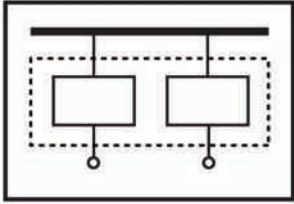
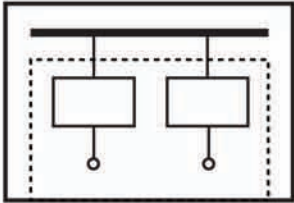
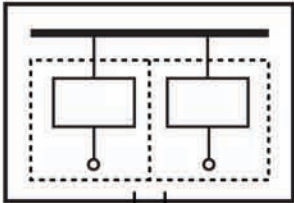
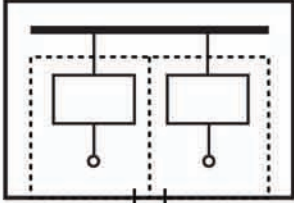
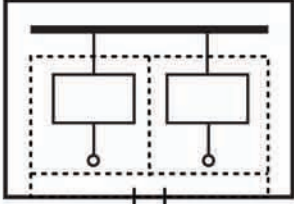
- ① Standard Terminal Box
- ② Perforated Terminal Boxes



MULTI SHAPE TERMINAL BOXES



INTERNAL FORM OF SEPARATION

Form		Main criteria	Sub-criteria
Form 1		No separation	
Form 2a		Separation of busbars from the functional units	Terminals for external conductors not separated from busbar
Form 2b		Separation of busbars from the functional units	Terminals for external conductors separated from busbar
Form 3a		Separation of busbars from the functional units and separation of all functional units from one another. Separation of the terminals for external conductors from the functional units, but not from each other.	Terminals for external conductors not separated from busbar
Form 3b		Separation of busbars from the functional units and separation of all functional units from one another. Separation of the terminals for external conductors from the functional units, but not from each other.	Terminals for external conductors separated from busbar
Form 4a		Separation of busbars from the functional units and separation of all functional units from one another, including the terminals for external conductors which are an integral part of the functional unit.	Terminals for external conductors in same compartment as the associated functional unit.

Form		Main criteria	Sub-criteria		
Form 4b		<p>Separation of busbars from the functional units and separation of all functional units from one another, including the terminals for external conductors which are an integral part of the functional unit.</p>	<p>Terminals for external conductors not in same compartment as the associated functional unit, but in individual, separate, enclosed protected spaces or compartments.</p>		
Symbol keys					
	Enclosure	Internal separation	Bussbar	Functional units including terminals for external conductors	Cable glands

Form 3b



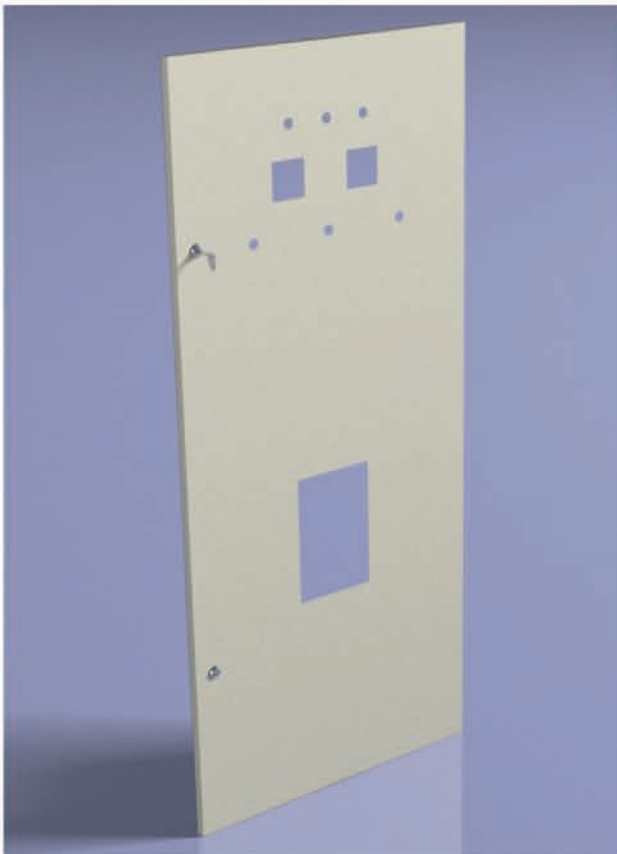
METAL DOOR



DOOR WITH DOCUMENT POCKET



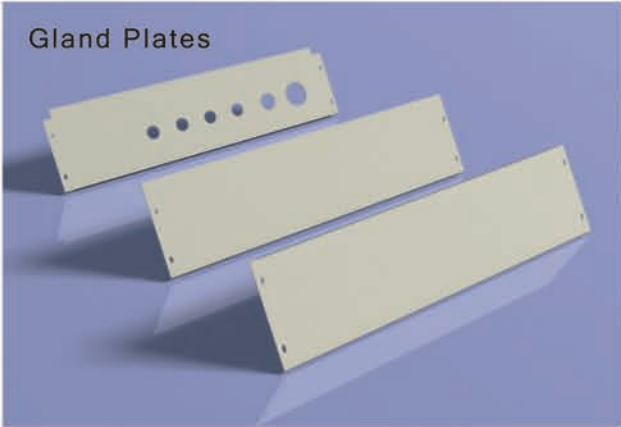
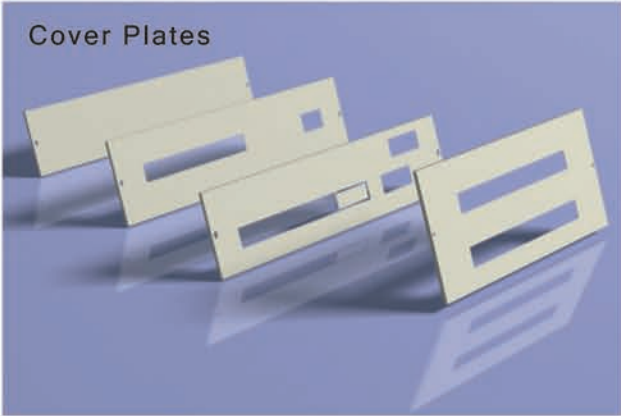
DOOR WITH CUTOUTS



SIDE AND BACK COVER PANELS



TRANSPARENT CP COVER AND GLAND PLATES



DOUBLE DOOR DOUBLE FRAME



Outdoor Low Voltage 1600A Din type Feeder Pillar

- EMP Outdoor low voltage Feeder pillars are rated at 1600A in accordance to IEC requirements. This enclosure is designed and constructed for Outdoor applications with an ingress protection rating of IP54. this Feeder Pillar is widely used in the Utilities industry specifically in the regional markets. The fuse bases are rigidly mounted on Hard Drawn tinned Copper Busbar of specified ratings.
- This cabinet is secured by a padlock system. Customized locking system to prevent unauthorized access can be designed to meet its specific requirements and conditions. The unique clamping system for cables access and can accommodate up to 300mmsq 4C XLPE cables.

Features

- Manufactured with industrial standards
- Full range of size available
- Suitable for outdoor environment fully type tested Busbar systems with Din type Fuse rails secured by padlock able system.

IP Class - IP 54

Standard - IEC 60529

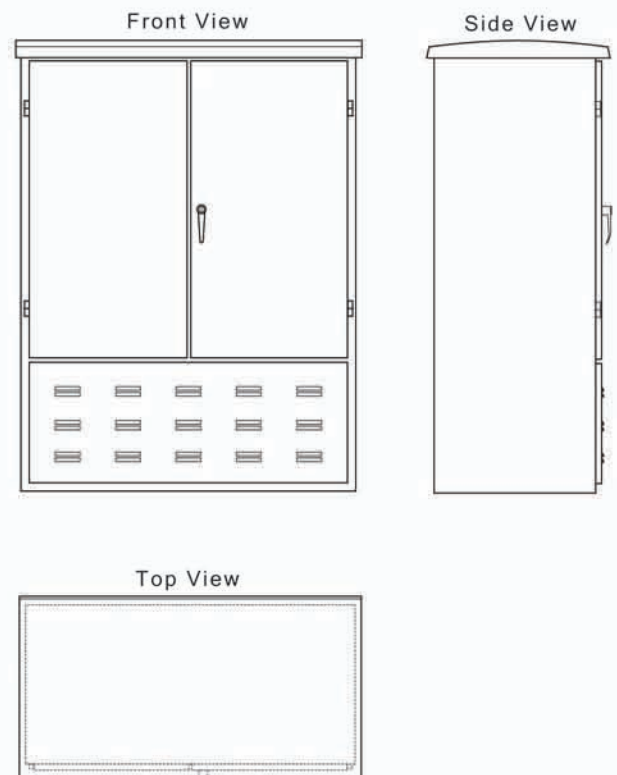
Material Specifications

- Aluzinc
- Material thickness: 1.0mm-2.0mm

Surface Finish: Exterior Powder coating textured / Semi gloss

Regular Colours: RAL 7032 - Pebble Grey
RAL 7035 - Light Grey
Others on request

Powder coating thickness: 100 ± 20% microns



Material Specifications

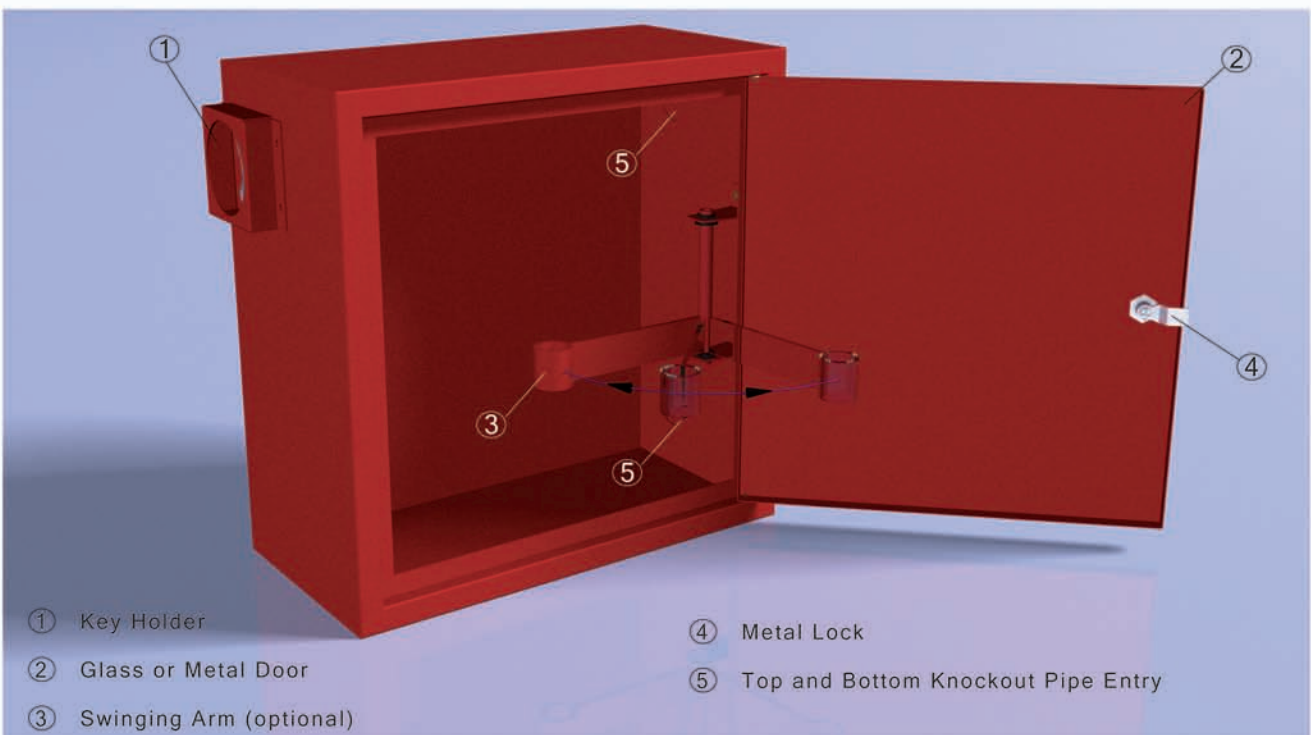
- Aluzinc
- Material thickness: 1.0mm-2.0mm

Surface Finish: Powder coating textured / Semi gloss

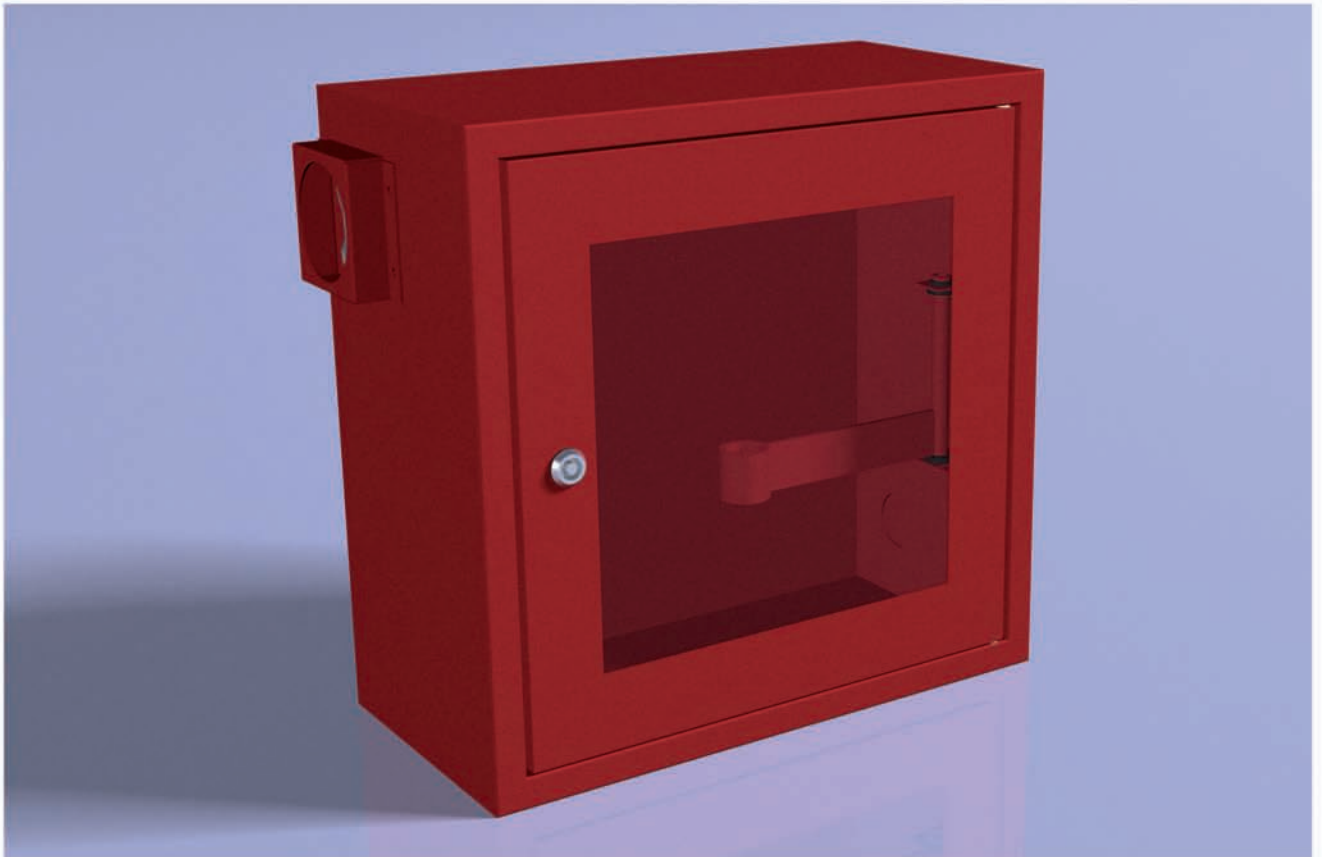
Regular Colours: RAL 3020 - Red

Powder coating thickness: $100 \pm 20\%$ microns

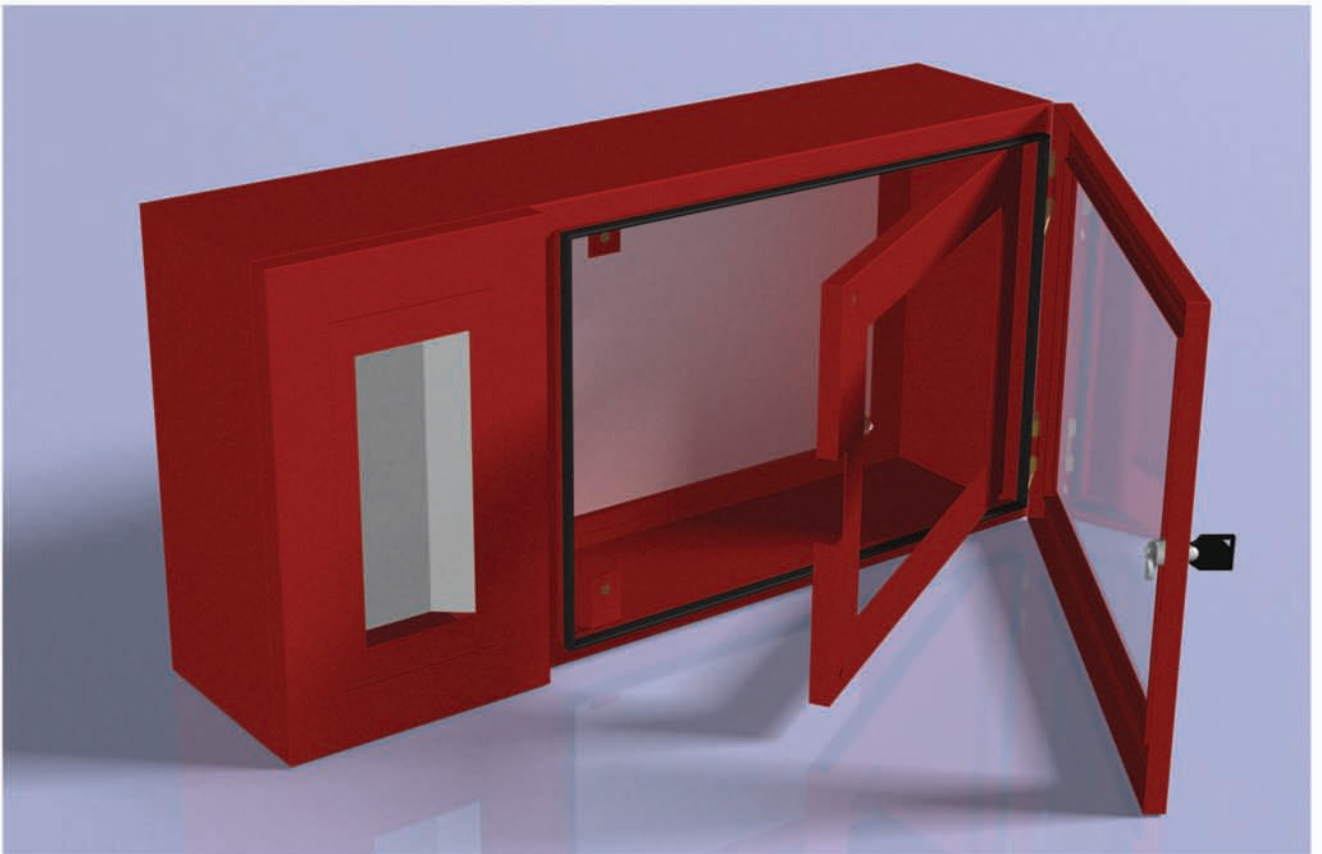
FIRE BOX



FIRE BOX WITH GLASS



MIMIK PANEL



SECOND NUMERAL

IP	Protection against harmful ingress of water		Meaning protection of persons against access to hazardous parts with:
	Requirements	Example	
0	No protection		No protection provided
1	Protected against vertically falling drops of water		Vertically dripping
2	Protected against vertically falling drops of water with enclosure tilted 15° from the vertical		Enclosure tilted 15° from the vertical
3	Protected against sprays to 60° from the vertical		Limited spraying
4	Protected against water splashed from all directions		Splashing from all directions
5	Protected against low pressure jets of water from all directions		Hosing jets from all directions
6	Protected against strong jets of water		Strong hosing jets from all directions
7	Protected against the effects of immersion between 15.0 cm and 1.0 cm		Temporary immersion
8	Protected against longer periods of immersion under pressure		Immersion

FIRST NUMERAL

IP	Protection against harmful ingress of water		Meaning protection of persons against access to hazardous parts with:
	Requirements	Example	
0	No protection		No protection provided
1	Full penetration of 50.0 mm diameter sphere not allowed and shall have hazardous parts. Contact with hazardous parts not permitted		Back of hand
2	Full penetration of 12.5 mm diameter sphere not allowed. The jointed test finger shall have adequate clearance from hazardous parts.		Finger
3	The access probe of 2.5 mm diameter shall not penetrate		Tool
4	The access probe of 1.0 mm diameter shall not penetrate		Wire
5	Limited ingress of dust permitted (no harmful deposit, refer to standard)		Wire
6	Totally protected against ingress of dust		Wire

CNC AMADA '2510NT'
Double Servo Turret Punch



CNC AMADA 'GR M2 1002'
Bender



RAMPF
Robotic Arm Gasketing
Machine





Since 1992

ELECTRO METAL PRESSINGS (Pvt) Ltd.

Lot No.26A, Templeburg Industrial Estate, Panagoda, Sri Lanka.

Tel: +94 11 444 2497 Fax: +94 11 275 1900

E-mail: sales@emp.lk , empsales@sltnet.lk , empfactory@sltnet.lk

www.emp.lk