



19-INCH RACK SYSTEMS

Server / Equipment Racks

Wall mounted Racks

Telecommunication Racks

Racks Accessories





ELECTRO METAL PRESSINGS (Pvt) Ltd.

Electro Metal Pressing (Pvt) Limited has more than 20 years of professional experience in the field of manufacturing electric switch boards, relevant cable light systems and accessories, providing superior quality products at reasonable prices.

This brief information catalogue is addressed to you in order to create awareness about our establishment, which produces a vast array of products used throughout the country. **Electro Metal Pressings (Pvt) Ltd** was established in 1992 in Sri Lanka as a leading panel fabricating, assembling & contracting company in the field of Electrical Engineering. We have a fully equipped modern factory at Templebuge Industrial Estate at Panagoda.

“Electrical Solution to the Nation” is our Philosophy. Our commitment is to manufacture high quality products, recognize, understand and fulfil our customers’ needs and focus on continuous improvement of the quality of our engineering products as well as 19” Equipment Racks. Our competent staff keeps very stringent, continuous supervision through all stages in the manufacturing process, so that our customers can rest assured, that they are supplied with a high quality product at a reasonable and affordable price.



We strive on maintaining strict time management so that the delivery process is expedited without any delay or inconvenience to the customer. We also produce a variety of products for the Electrical industry, including installations etc., keeping in mind that Quality, Safety & Reliability as our first priority.

This miniaturized catalogue gives you the necessary General Information and Guidelines for Power Distribution Panels, Motor Control Centers, Capacitor Banks, Slotted Embossed Cable Trays, Slotted Cable Ladders, Cable Trunking, 19” Equipment Rack Systems with accessories, etc.

We are glad to mention that the EMP Group has made significant contributions to the development programmes in Sri Lanka, since its inception 20 years ago. With seven Companies under its wing, EMP has created 1000 employment opportunities and continues with the honourable and responsible task of providing affordable and essential products

ELECTRO METAL PRESSINGS (Pvt) Ltd.

Contacts:

Lot No.26A, Templeburg Industrial Estate,
Panagoda, Sri Lanka.
Tel: +94 11 444 2497
Fax: +94 11 275 1900
E-mail: sales@emp.lk, empsales@sltnet.lk,
www.emp.lk

INTRODUCTION	04
SERVER / EQUIPMENT RACKS	05
RACKS ACCESSORIES	15
WALL MOUNTED RACKS	20
TELECOMMUNICATION RACKS	24



Server Racks/ Wall mounting Enclosures

Each of our cabinets is made from high quality material, designed to last for a very long time. Any electrical components stored inside will be protected from dust and static build up. They will also be placed out of the way of physical harm, such as bumps and knocks. Alternatively, we also stock a range of free standing varieties, meaning that you can find a product that will fit into your office environment quite easily. To further expand our services, we also sell small accessories such as spare shelving and cable management rings at very competitive prices, so that you can customize your computer server cabinets with ease.



STANDARD RACK

Standard construction:

1. Main Frame
 - a. Welded structure frames
 - b. Assemble structure frame (On request)
2. Front Glass door with key locks/
Perforated Mesh door (On request)
3. Rear ventilated door
4. Removable side covers
5. 4 x Adjustable Mounting Railings
6. Leveling stand/ Caster wheels (Optional)
7. Top and bottom cover plates
8. Removable gland plates
9. 150 mm wide vertical cable ladder
10. Stainless steel door hinged



STANDARD RACK

Features

- Manufactured with industrial standards
- Available in Welded structure and Assemble mode structure
- Assembled mode structures - can be dismantled for easy transport
- Removable side doors to enable convenient operation from both sides of rack
- Static load up to 1000 kg
- Front Glass door with perforated frame
- Mesh door with 65% ventilated rate (Optional)
- Easy to disassemble front/ rear/ and side doors; enable easy accessibility.
- Up to IP 20 protection
- Full range of size available

Compatibility

- IBM, DELL, HP, SUN and compatible servers

- CISCO, AMP, 3M, AWAYA and other active and passive components
- Ericson, Motorola, Alkatel, ZTE, Huawei and other Telco products

Material Specifications

- Base material: Zn Aluminum (Zn+Al+Si)
- Material thickness: Mounting profile 2mm; Mounting angle 1.5mm; Other 1.2mm

Surface finish: Sand finish/ Texture finished/ Plain finished

Regular Colours: RAL 7032 - Pebble Grey
RAL 7035 - Light Grey
RAL 9010 - Sand Black
Others on request

Powder coating thickness: 100 ± 20% microns

Warranty: 20 Years against corrosion



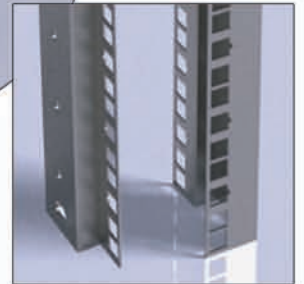
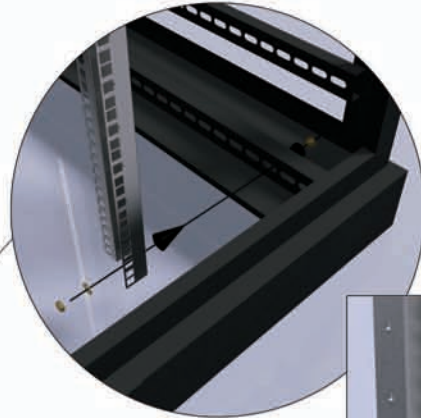
MOUNTING RAILINGS (ADJUSTABLE HORIZONTALLY)



Specification

A rack's mounting fixture consists of two parallel metal strips standing vertically.

The rails have holes in them at regular intervals, with both rails matching, so that each hole is part of a horizontal pair with a centre-to-centre distance of 18.3 inches. The holes in the rails are arranged vertically in repeating sets of three, with centre-to-centre separations of 0.5 inch, 0.625 inch, 0.625 inch. The hole pattern thus repeats every 1.75 inches.



CABLE LADDER



Features:

- 150 mm wide and height runs from top to bottom
- Easily installed
- Double folded edge of cable safety



FIXING PLATES



- ① Top and bottom Gland plate
- ② Fan plate with Exhaust fans
- ③ Cable gland plate

REMOVABLE COVERS



FRONT DOOR



BACK DOOR



FIXING TRAYS (OPTIONAL)



POWER DISTRIBUTION AND MOUNTING METHODS (OPTIONAL)



- ① Horizontal Power Rails
- ② Vertical Power Rails



RACK WITH ACCESSORIES



- | | |
|---------------------|--------------------------|
| ① Main Frame | ⑨ Fixed Tray |
| ② Glass Door | ⑩ Sliding Tray |
| ③ Side Cover | ⑪ Cable Ladder |
| ④ Back Door | ⑫ Power Bare |
| ⑤ Mounting Railings | ⑬ Castor wheels |
| ⑥ Gland Plates | ⑭ Stainless steel hinged |
| ⑦ Fan Plate | ⑮ Door Lock |
| ⑧ Cantilever Shelf | ⑯ Side Cover Locks |

OPEN RACK

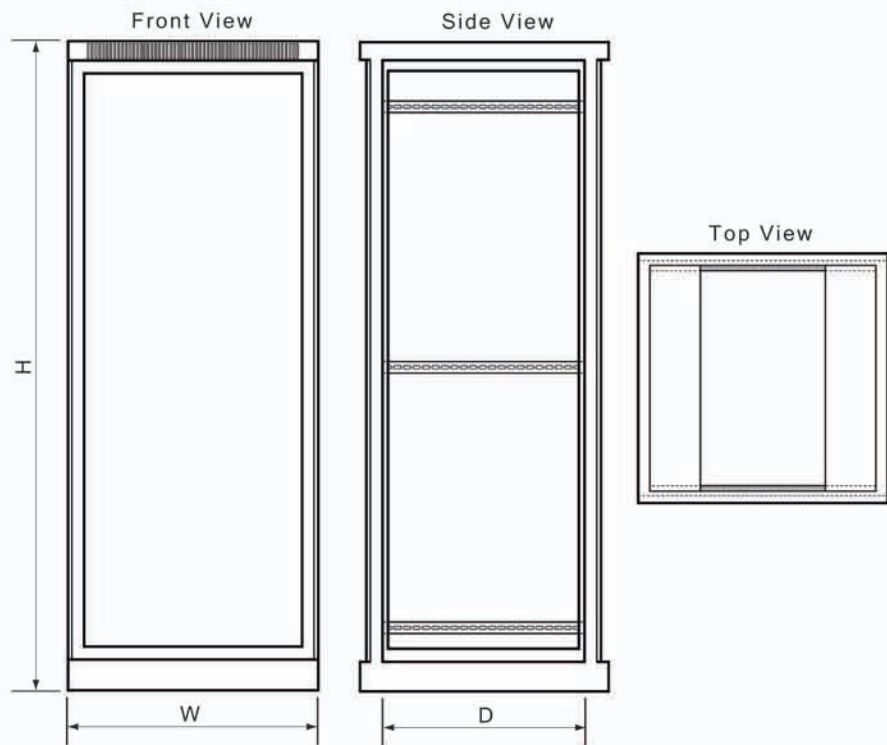
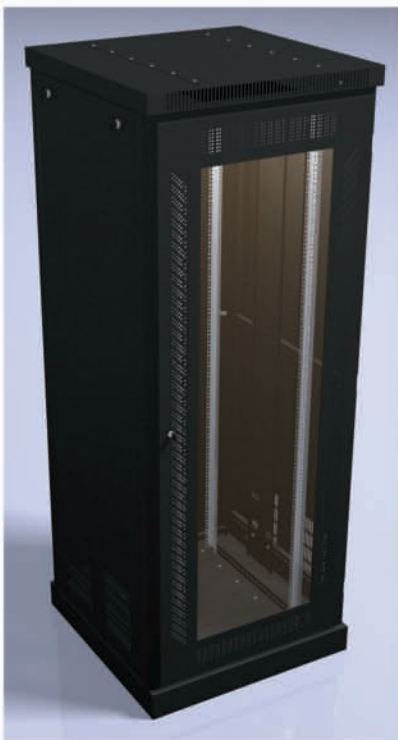
Standard construction:

1. Main Frame
 - a. Welded structure frames
 - b. Assemble structure frame (On request)
2. 4 x Adjustable Mounting Rrailings
3. Leveling stand/ Caster wheels (Optional)
4. Top and bottom cover plates
5. Removable gland plates
6. 150 mm wide vertical cable ladder



FLOOR STANDING RACKS / ORDER INFORMATION

Part No.	W mm	H mm	D mm	Model
FS-21U-600	600	1200	600	21U
FS-31U-600	600	1600	600	31U
FS-35U-600	600	1800	600	35U
FS-40U-600	600	2100	600	40U
FS-42U-600	600	2200	600	42U
FS-44U-600	600	2300	600	44U
FS-31U-800	600	1600	800	31U
FS-35U-800	600	1800	800	35U
FS-40U-800	600	2100	800	40U
FS-42U-800	600	2200	800	42U
FS-44U-800	600	2300	800	44U
FS-31U-8-800	800	1600	800	31U
FS-35U-8-800	800	1800	800	35U
FS-40U-8-800	800	2100	800	40U
FS-42U-8-800	800	2200	800	42U
FS-44U-8-800	800	2300	800	44U
FS-31U-8-1000	800	1600	1000	31U
FS-35U-8-1000	800	1800	1000	35U
FS-40U-8-1000	800	2100	1000	40U
FS-42U-8-1000	800	2200	1000	42U
FS-44U-8-1000	800	2300	1000	44U



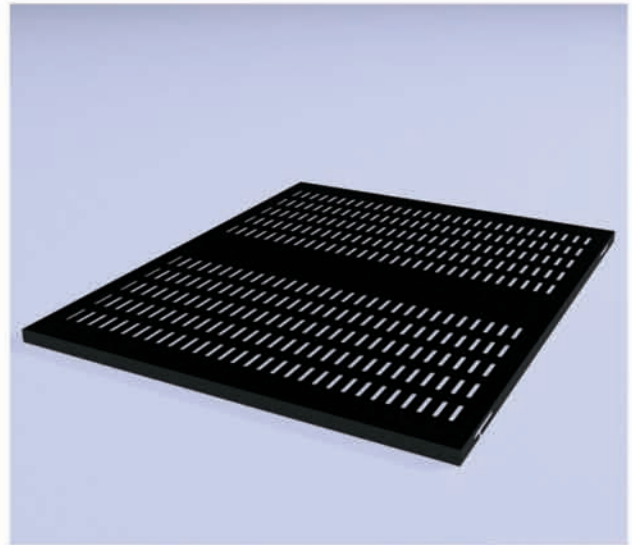
FIXED TRAY

Part No.	W mm	D mm
FT6-300	483	300
FT6-400	483	400
FT6-500	483	500
FT6-600	483	600
FT6-700	483	700

Fixed Trays 19" 4 x Rail Mounting Type

Features:

- Front and Rear railings Mounted
- Heavy duty load bearing capacity 50kg
- Fully vented
- Easily installed
- Mounting brackets available when standard installation is difficult



CANTILEVER SHELF

Part No.	U	W mm	D mm
CS6-300	1U	483	225
CS6-400	2U	483	300

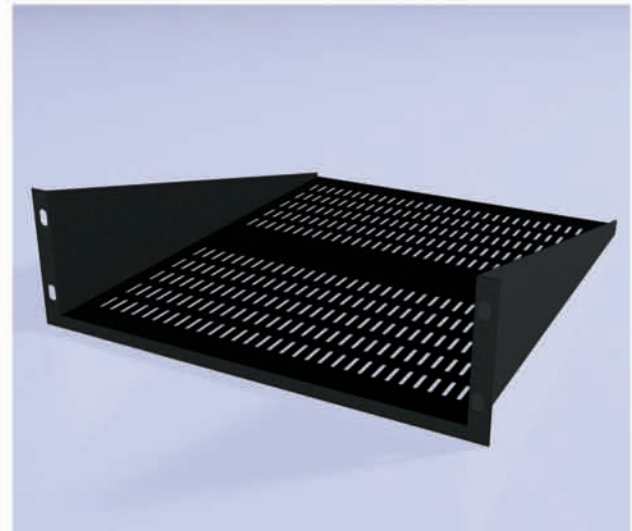
Fixed Tray 19" Rail Mounting Type

Usage:

- All cabinets
- All wall mount cabinets
- All open frames

Features:

- Front Railing Mounted
- Easily installed
- All fasteners provided



SLIDING TRAY

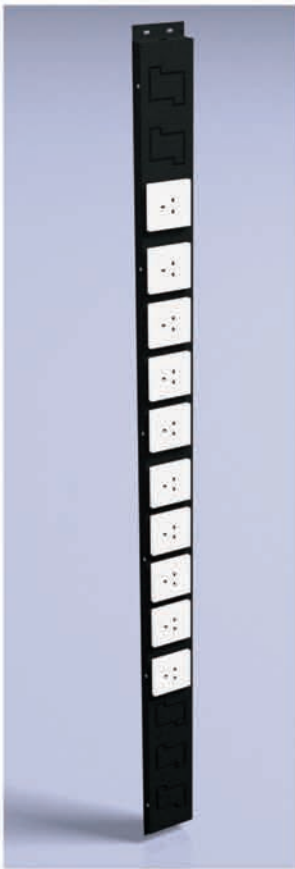
Part No.	W mm	D mm
SD6-300	483	300
SD6-400	483	400
SD6-600	483	600

Features:

- Slide to full length
- Load capacity 50kg
- Ball bearing slide for greater control of heavy loads
- Fully vented
- Fasteners provided
- Easily installed



VERTICAL POWER RAILS

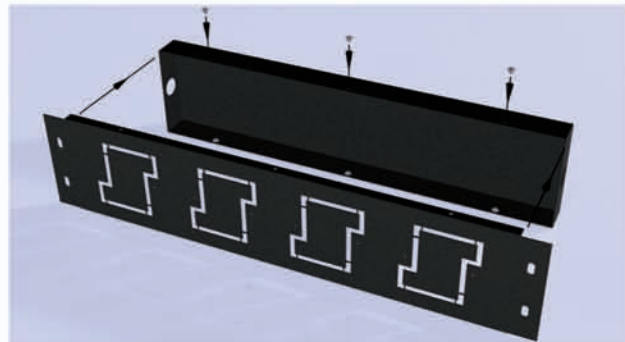
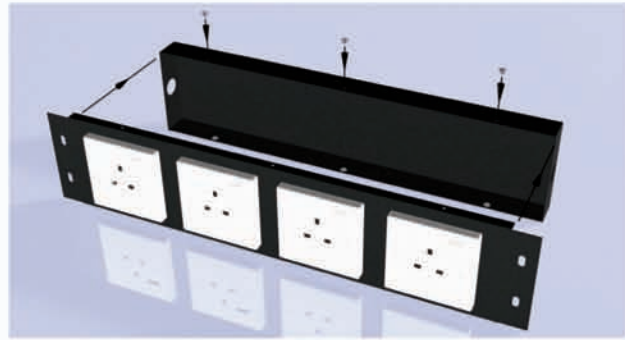


U	Max up to
31U	10 way
35U	12 way
40U	16 way
42U	16 way
44U	18 way

Features:

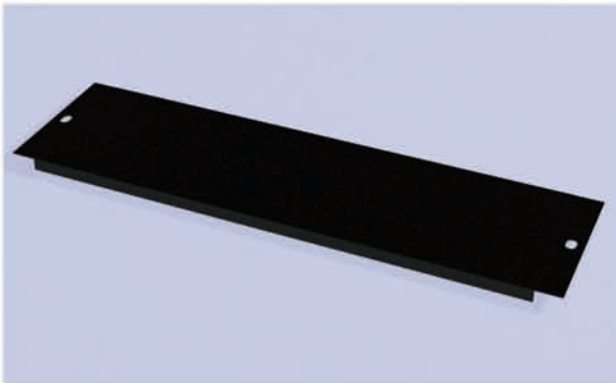
- BS 1361-1
- 13A socket outlet
- 3Ka protection
- 240 volts
- Easily installed

HORIZONTAL POWER RAILS

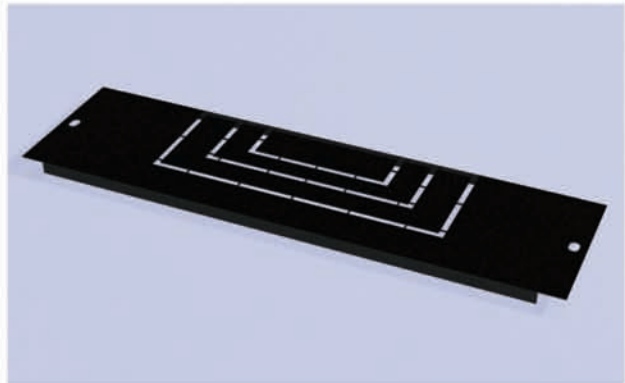


Part No.	Description
PW-19"-EM	Socket Outlet Plate 4 way (without S/O)
PW-19"-13A	Socket Outlet Plate 4 way with 13A S/O

LOUVER PLATE



CABLE GLAND PLATE



FAN PLATE (EMPTY)

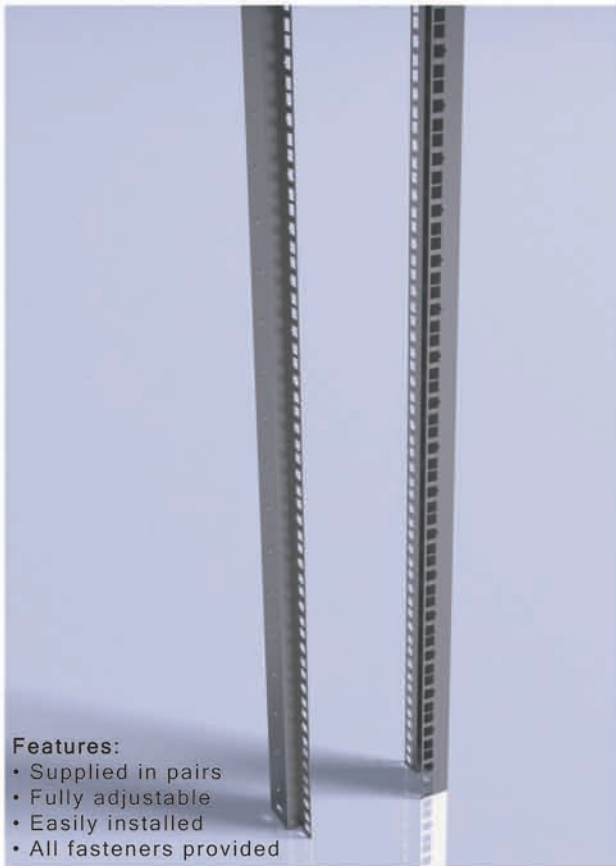


FAN PLATE (C/W FANS)



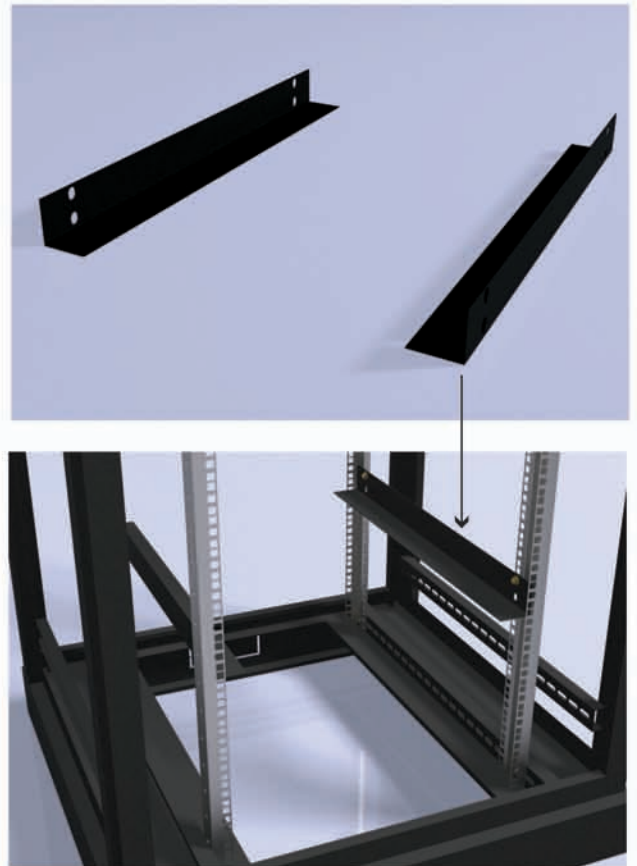
Available 4 inch or 6 inch

MOUNTING RAILS

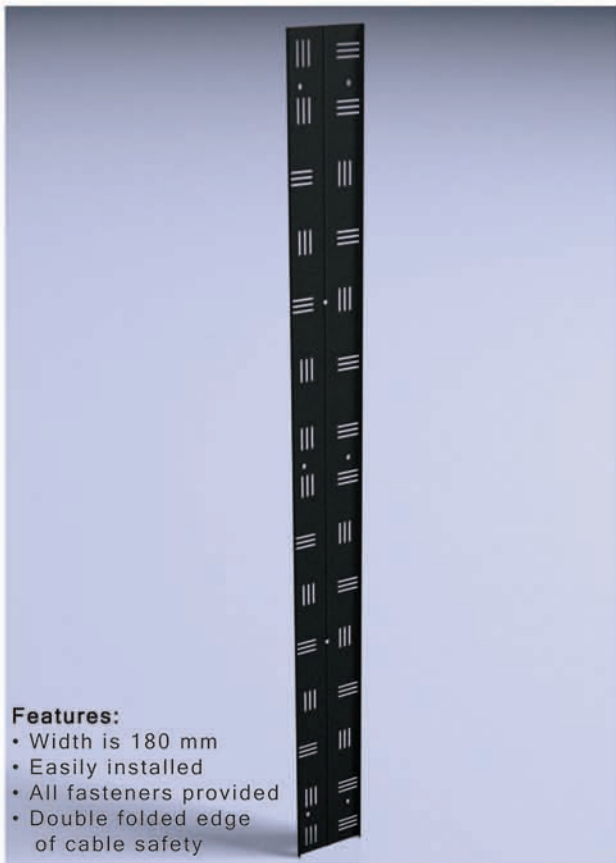


- Features:**
- Supplied in pairs
 - Fully adjustable
 - Easily installed
 - All fasteners provided

SUPPORT RAILS



CABLE LADDER

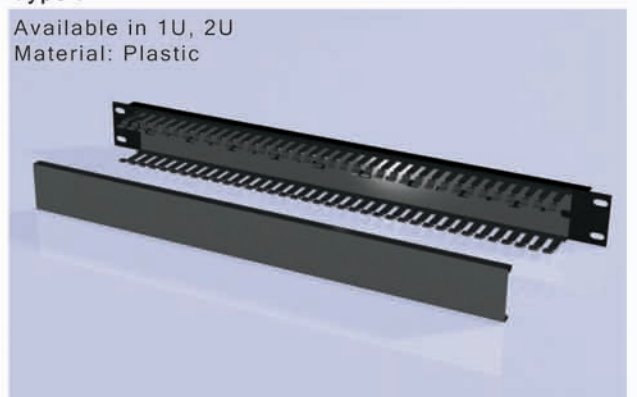


- Features:**
- Width is 180 mm
 - Easily installed
 - All fasteners provided
 - Double folded edge of cable safety

CABLE MANAGEMENT

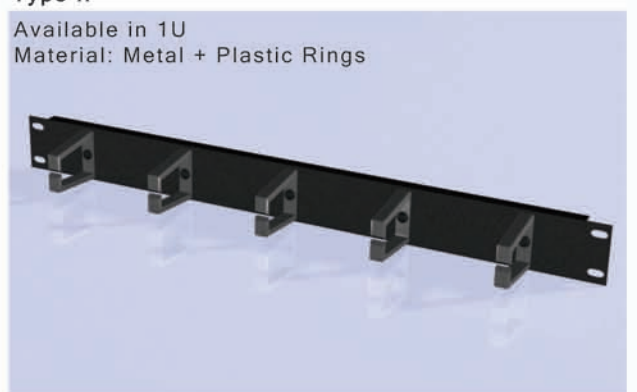
Type I

Available in 1U, 2U
Material: Plastic



Type II

Available in 1U
Material: Metal + Plastic Rings



GLASS DOOR



STEEL PERFORATED MESH DOOR



BACK DOOR



SIDE COVER



BLANK PLATE WITH LOUVRES



Part No.	Description
BL-19"-1U	Blanking Plate 1U
BL-19"-2U	Blanking Plate 2U

BLANK PLATE



Feature:

Can be used with all 19" cabinets and wall mounted frames

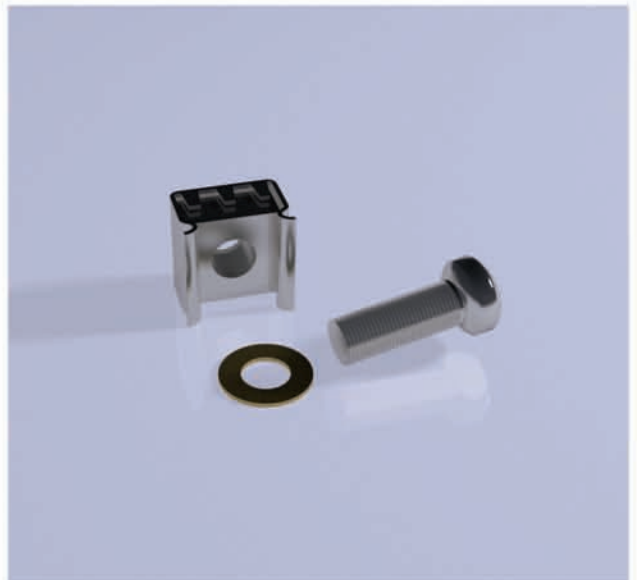
CASTORS



Features:

- Castors attach directly to frame of cabinet for extra stability and support
- Available as a set of (4) four
- Front castors are provided with brakes
- Castors will raise the cabinet enclosure 100mm to 150 mm off the ground
- Load capacity to 250kg per wheel.

CAGE NUT



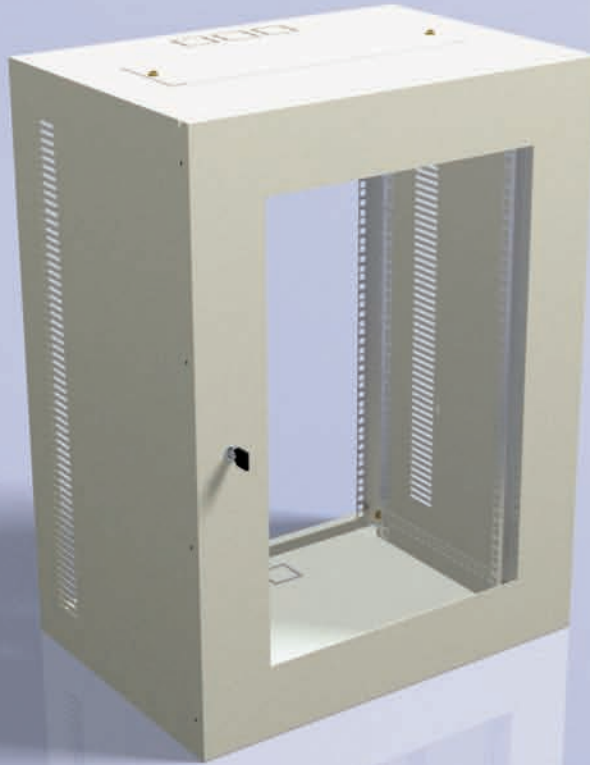
Features:

- Each fastener kit consists of cage nuts, screws and washers
- Easily installed
- Electro-Galvanized

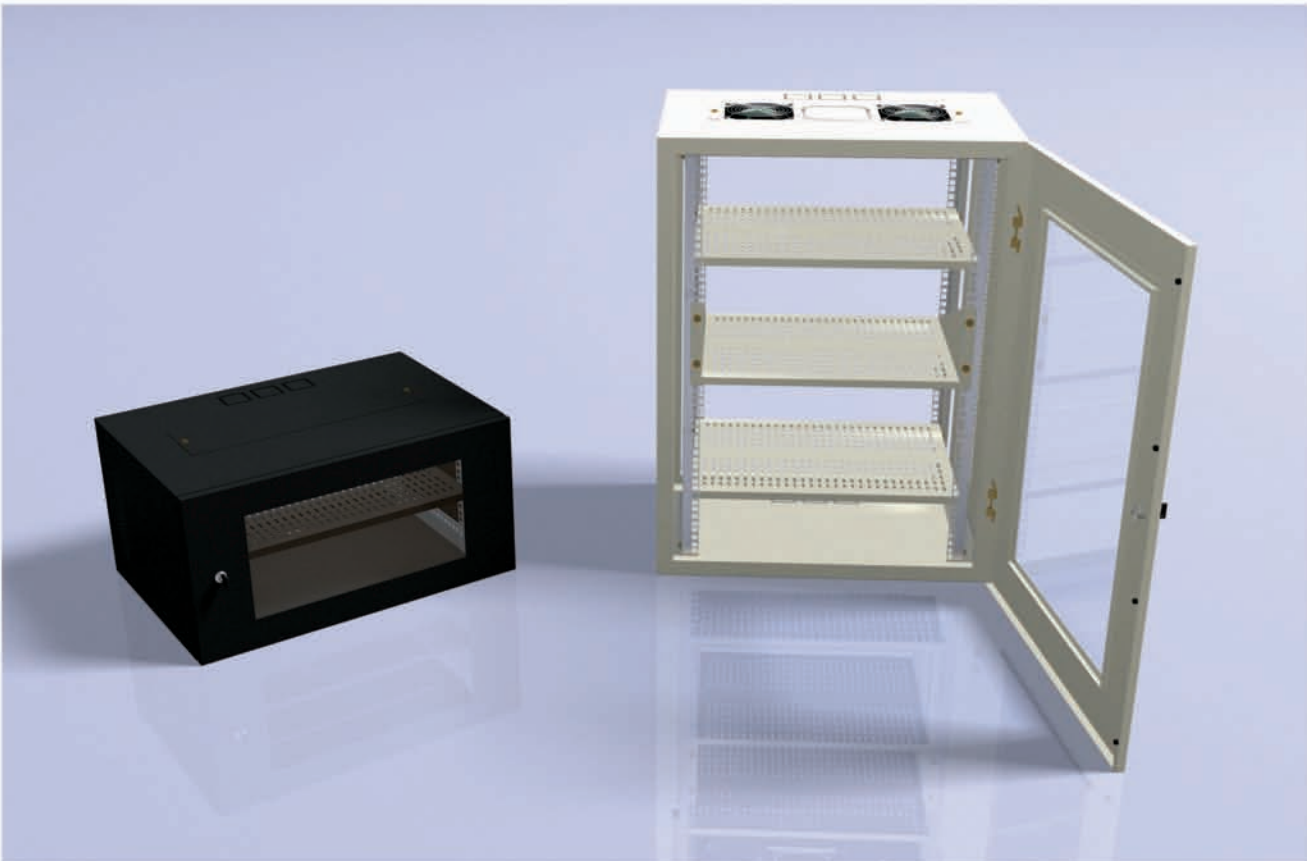
WALL MOUNTED RACK (STANDARD)

Standard construction:

1. Main Frame - Welded structure frames
2. Front Glass door with key lock
3. 2 x Adjustable railings
4. Top and bottom cable entry plates
5. Removable gland plates
6. Stainless steel door hinged

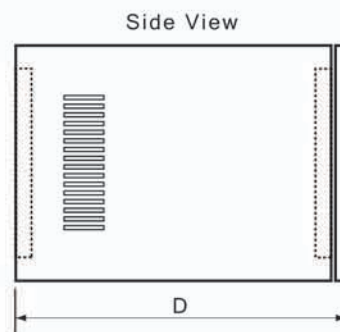
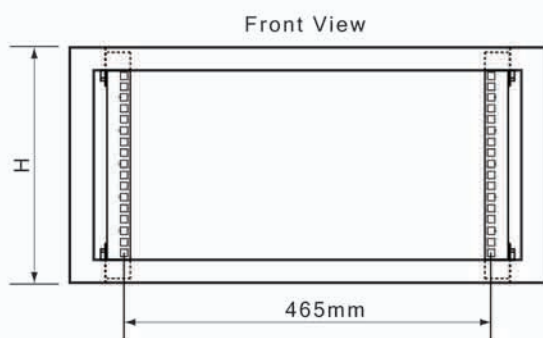
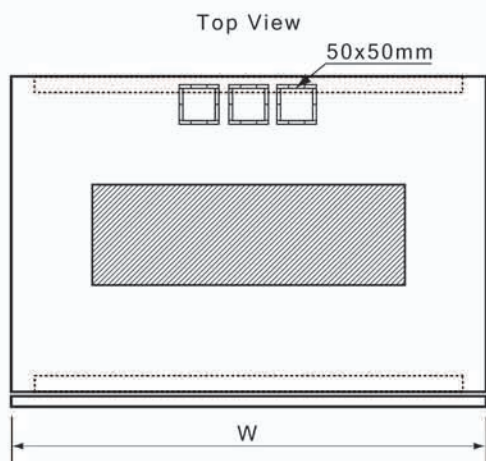


WALL MOUNTED RACK WITH ACCESSORIES

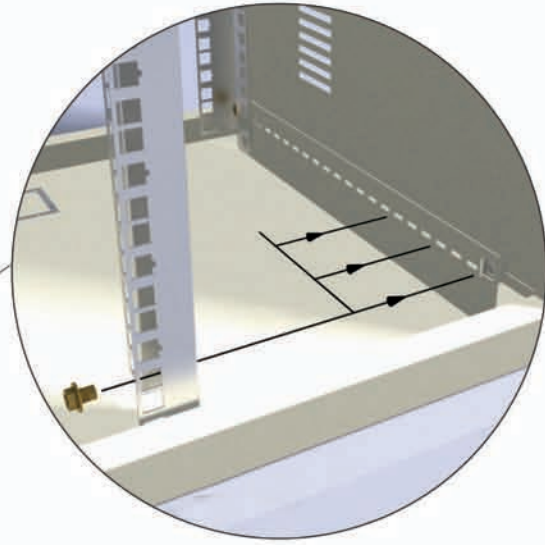
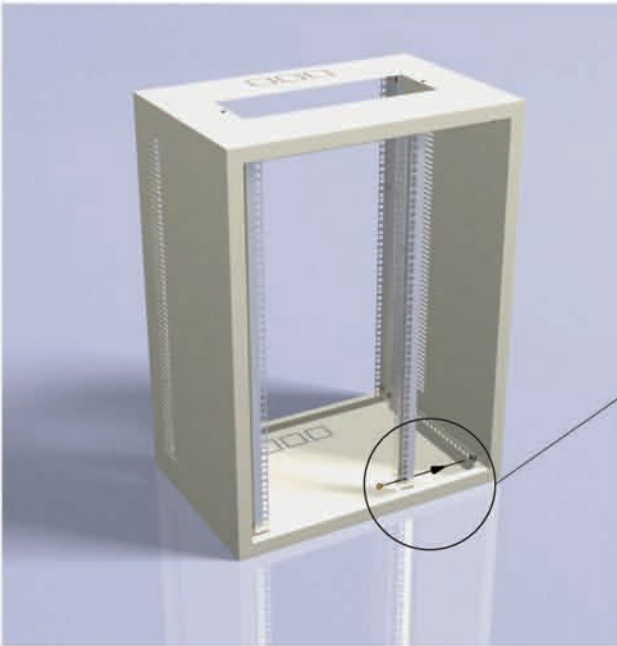


WALL MOUNTED RACKS / ORDER INFORMATION

Part No.	W mm	H mm	D mm	Model
WM-3U-425	600	225	425	3U
WM-5U-425	600	300	425	5U
WM-7U-425	600	400	425	7U
WM-10U-425	600	550	425	10U
WM-12U-425	600	600	425	12U
WM-16U-425	600	800	425	16U
WM-21U-425	600	1000	425	21U
WM-3U-600	600	225	600	3U
WM-5U-600	600	300	600	5U
WM-7U-600	600	400	600	7U
WM-10U-600	600	550	600	10U
WM-12U-600	600	600	600	12U
WM-16U-600	600	800	600	16U
WM-21U-600	600	1000	600	21U



MOUNTING RAILINGS (ADJUSTABLE)



EXHAUST FAN PLATE

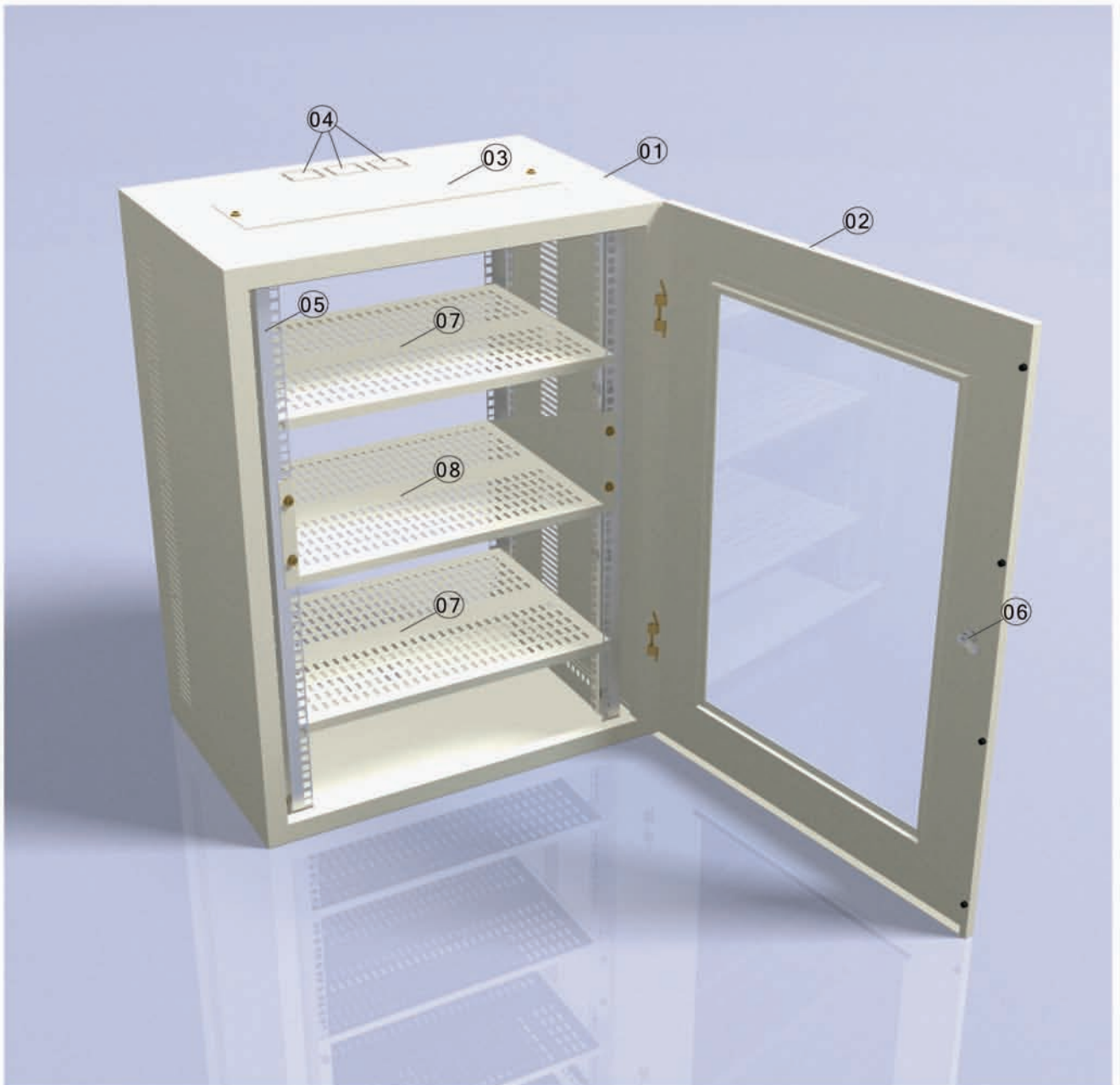


DOOR



Fan Plate with:

- Single Fan
- Double Fans
- 3 Fans



- ① Cabinet
- ② Glass Door
- ③ Gland Plate
- ④ Cable entry knock out
- ⑤ Mounting Railings
- ⑥ Door Lock
- ⑦ Fixed Tray (Optional)
- ⑧ Cantilever Shelf (Optional)

SLIM RACK STANDARD

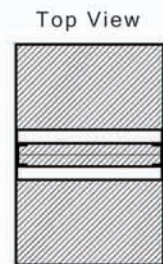
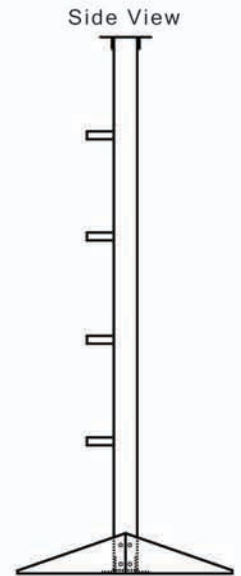
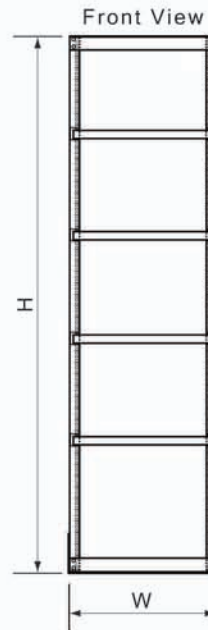


SLIM RACK WITH ACCESSORIES



TELECOMMUNICATION RACK (MICRO RACK) / ORDER INFORMATION

Part No.	W mm	H mm	Model
FS-31U-600	600	1600	31U
FS-35U-600	600	1800	35U
FS-40U-600	600	2100	40U
FS-42U-600	600	2200	42U
FS-44U-600	600	2300	44U



Slim Rack meets the requirements of medium fiber count networks. It is intended for use in a single frame application and should not be used in a multi-frame lineup.

Benefits

- All front access design saves floor space
- Superior fiber management reduces congestion and jumper pile-up
- Innovative design supports long-term future fiber growth projections
- Both on-frame or off-frame splicing conventions are supported

Application

This small distribution rack is based on the principle of a vertical sliding drawer which is installed in the transmission station close to or within the racks accommodating the active systems.

It meets the requirement to immediately distribute the fiber outputs from the equipment to the dedicated fiber in the break-out cables or to other distribution racks, in the context of wavelength cross-connection, for example.

The Slim rack includes coiling and patching functions, and is able to accommodate several connection standards.

Description :

The Slim rack is a distribution rack which is based on an extremely simple design, and which typically allows 80 interconnection points to be effected, while accommodating all excessive fibre lengths.

The various fibre connected are separated physically in dedicated cells. It also provides patching and coiling functions for the fibre coming from the transmission stations and distributed to the cables existing via the top or bottom of the rack.

CNC AMADA '2510NT'
Double Servo Turret Punch



CNC AMADA 'GR M2 1002'
Bender



RAMPF
Robotic Arm Gasketing
Machine





Since 1992

ELECTRO METAL PRESSINGS (Pvt) Ltd.

Lot No.26A, Templeburg Industrial Estate, Panagoda, Sri Lanka.

Tel: +94 11 444 2497 Fax: +94 11 275 1900

E-mail: sales@emp.lk , empsales@sltnet.lk

www.emp.lk